

ILLUSTRATED PARTS BREAKDOWN

VAX 6000-500 SYSTEM

HOW TO USE THE IPB

GENERAL

This IPB is compiled following the organization and nomenclature of the engineering drawing structure.

MAJOR ASSEMBLY LOCATOR (When Applicable)

The Major Assembly Locator (first illustration) is an index that provides a description and a figure reference for all illustrations used in this manual.

INDENTED PARTS LIST

This manual identifies each assembly being broken down (figure reference callout), and all parts of that assembly. Further breakdown of an assembly is shown by an asterisk (*) preceding the item callouts in the Description Column. The number of asterisks preceding an item is used to denote the subordination of that item with respect to the Major Assembly. A single asterisk preceding an item description indicates that the item is part of the major assembly being illustrated. Items that are subordinate to single asterisks items, are denoted by two asterisks (**) and immediately follow the related single asterisk item. This system of part identification provides a means for the user to identify the next higher assembly item and make alternate selections for parts when the required replacement part of assembly is not immediately available.

COLUMN CALLOUT DESCRIPTION

Figure and Item - Indicates the figure number and item number of each part.

Description - Lists the name of the part and pertinent specifications (when required). Asterisks preceding the description denote the subordination of the part to the next higher assembly.

DEC Part No. - Lists the Digital part ordering number. A blank in this column indicates a Digital part number was not assigned at the time of publication.

ECO Cut-In - The notation at the top of this column indicates the ECO level of the system (option), at which the IPB was initially prepared. Subsequent ECO level designations, that modify existing parts or add new parts to the device, are inserted in the ECO Cut-In column next to the part that is added or modified.

Used On Code - Letters in this column correspond to the variation codes assigned in Figure 1. Parts with an Alpha notation(s) are used only in those option variations. A blank indicates that the part is used on all option variations.

Ref Fig No. - A cross reference between illustrations. For each Major Assembly, the number in this column denotes the figure of the next higher assembly. For all subassemblies, the number in this column denotes the figure showing additional detailed breakdown.

PART NUMBER/PART DESCRIPTION INDEX SECTION
Parts are indexed both numerically and alphabetically by description, referenced to a location within the IPB, by figure number and item number.

REVISION HISTORY				OTHER IPB MANUALS REFERENCED
PRINTING	ECO LEVEL		DATE	
1st Printing	H9657	00001-00001	18-JAN-91	N/A
	70-24614	00003-00003		
	70-24623	00004-00004		
	70-24124	00003-00003		
	70-27867	00000-00000		
	H7206	00001-00001		
	H405	00000-00000		
	70-22814	00000-00000		
	70-22815	00000-00000		
	70-24902	00003-00003		
	H7215	00005-00005		
	H7214	00004-00004		
	H7242	00000-00000		

Digital Equipment Corporation reserves the right, without notice, to make substitutions and modifications in the specifications of products documented in this manual and further reserves the right to withdraw any of these products from the market without notice.

Digital Equipment Corporation is not responsible for errors which may appear in the technical description (including illustrations and photographs) of the products covered by this manual.

None of the descriptions contained in this manual imply the granting of any license whatsoever to make, use or sell equipment constructed in accordance therewith.

Restricted Rights: Use, duplication or disclosure by the U.S. Government is subject to restrictions as set forth in subparagraph (c) (1) (ii) of the Rights in Technical Data and Computer Software clause at DFARS 252.227-2713.

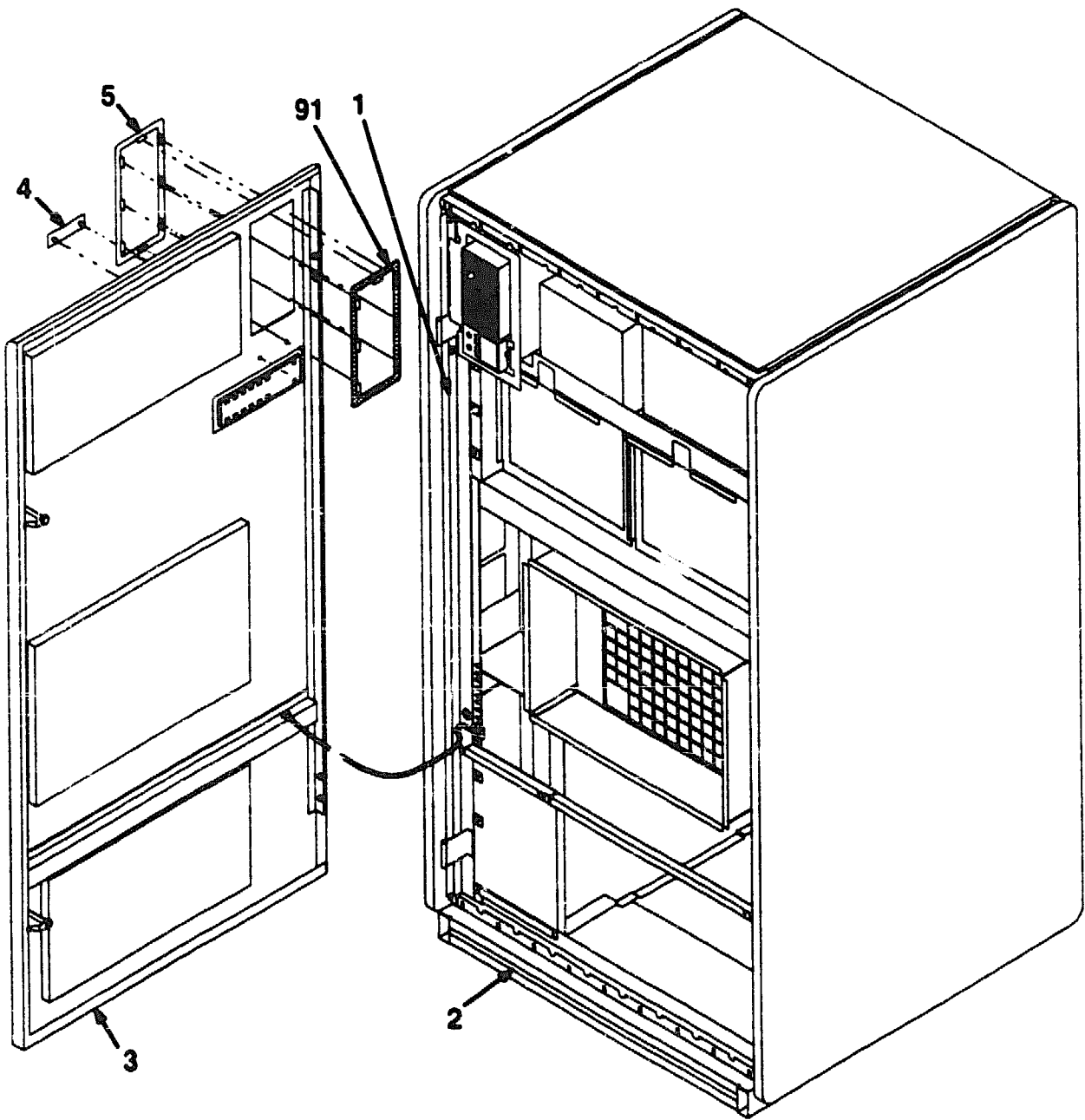
Copyright © 1991 by Digital Equipment Corporation. All rights reserved.

The postage-paid READER'S COMMENTS form on the last page of this document requests your critical evaluation to assist us in preparing future documentation.

The following are trademarks of Digital Equipment Corporation :



DECdirect
TK
VAX
VAX 6000
VAX 6000-500
XMI



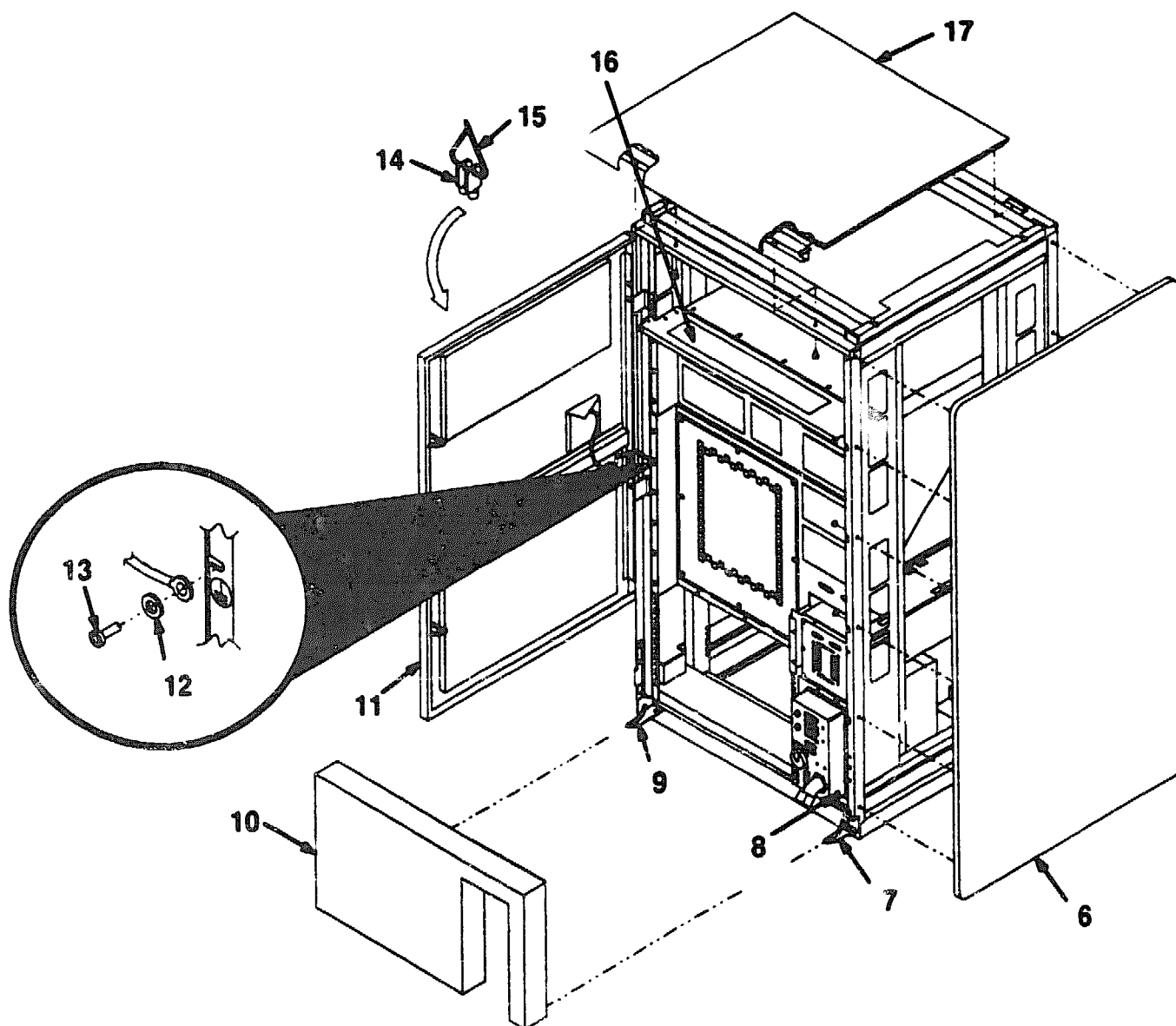
FRONT VIEW

6500X-01-IL

Figure 1. System Assembly, VAX 6000-500 (Sheet 1 of 5)

PARTS LIST

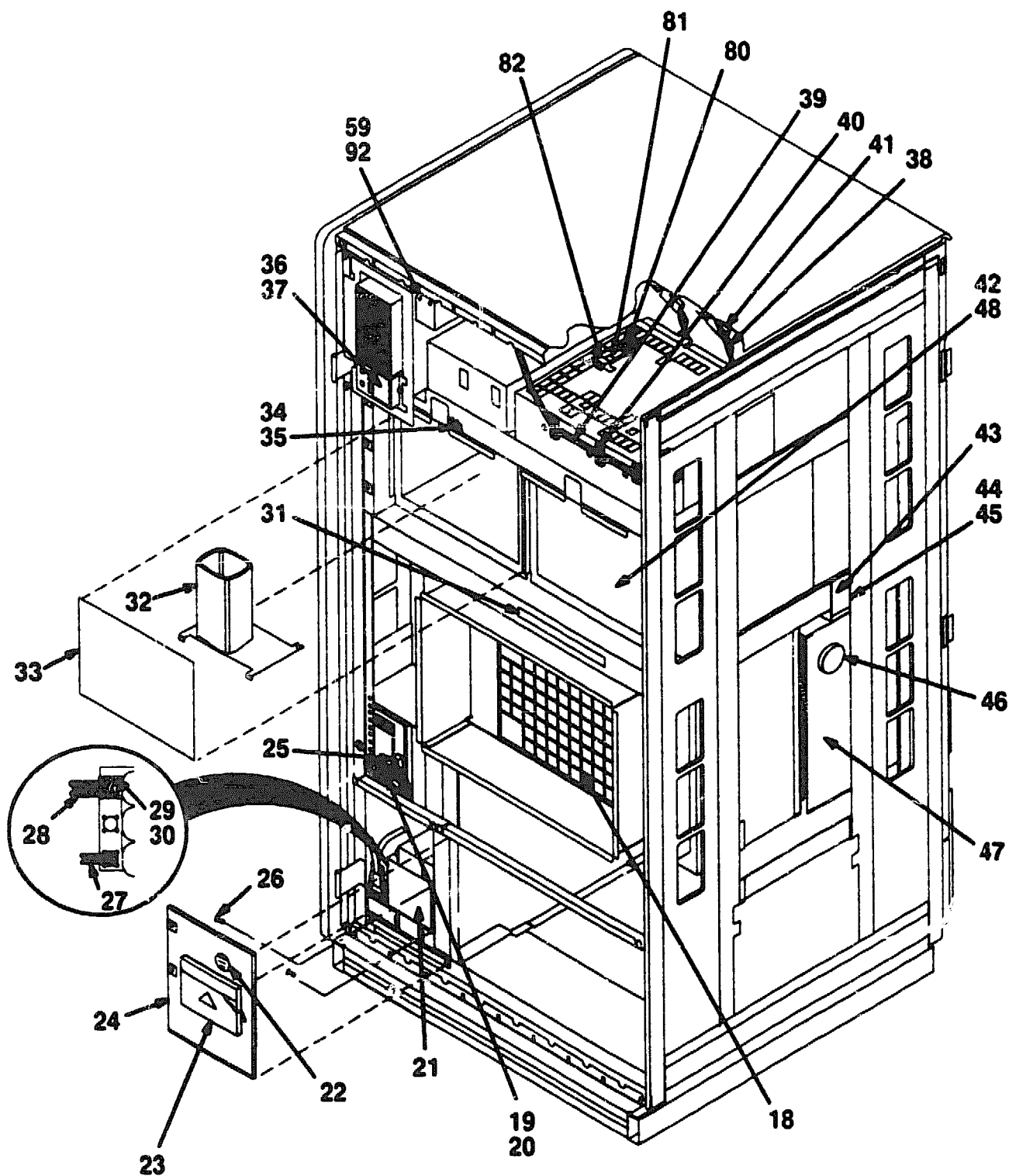




REAR VIEW

6500X-01A-IL

Figure 1. System Assembly, VAX 6000-500 (Sheet 2 of 5)



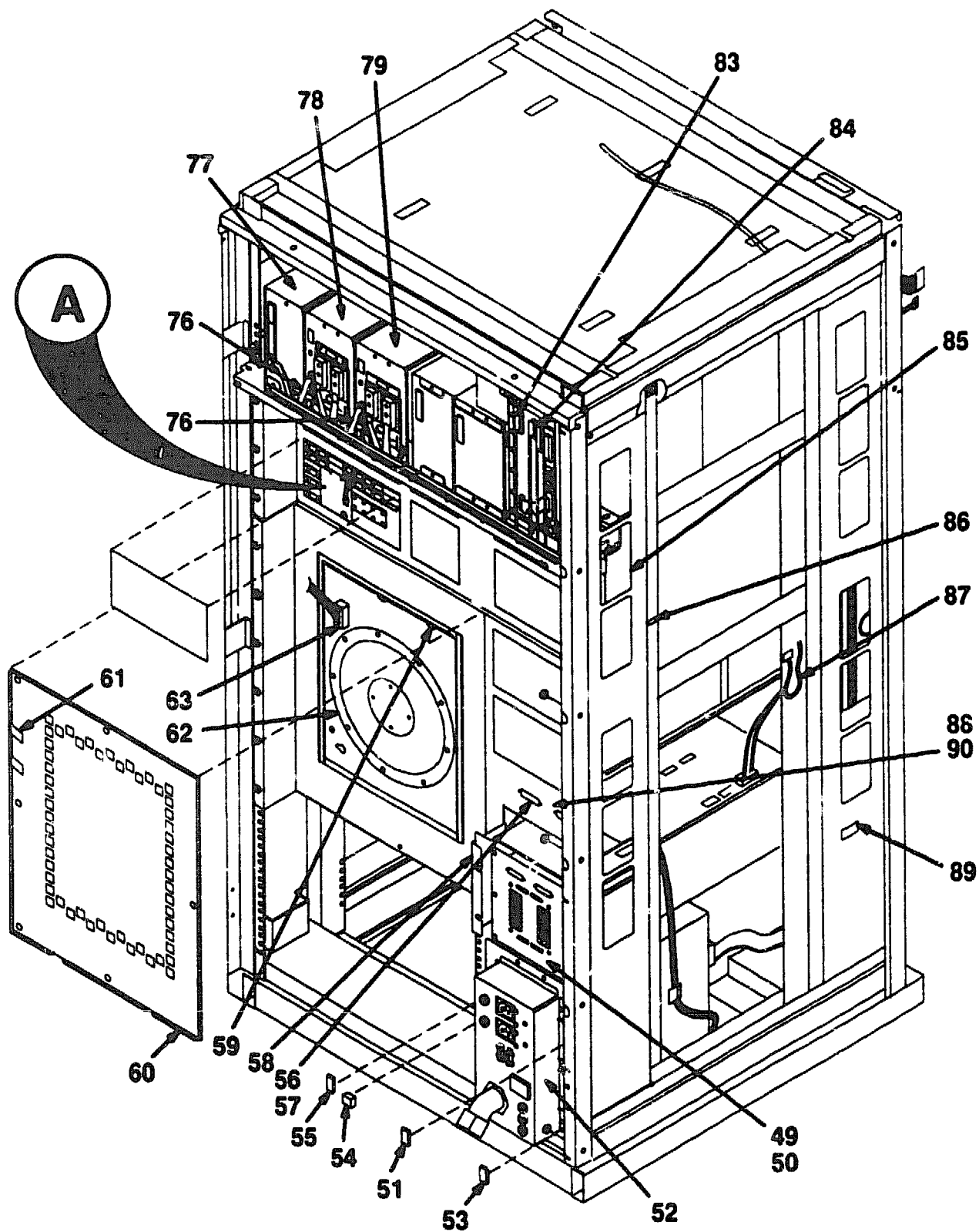
FRONT VIEW - SHOWN WITH END PANELS REMOVED

6500X-01B-IL

Figure 1. System Assembly, VAX 6000-500 (Sheet 3 of 5)

PARTS LIST



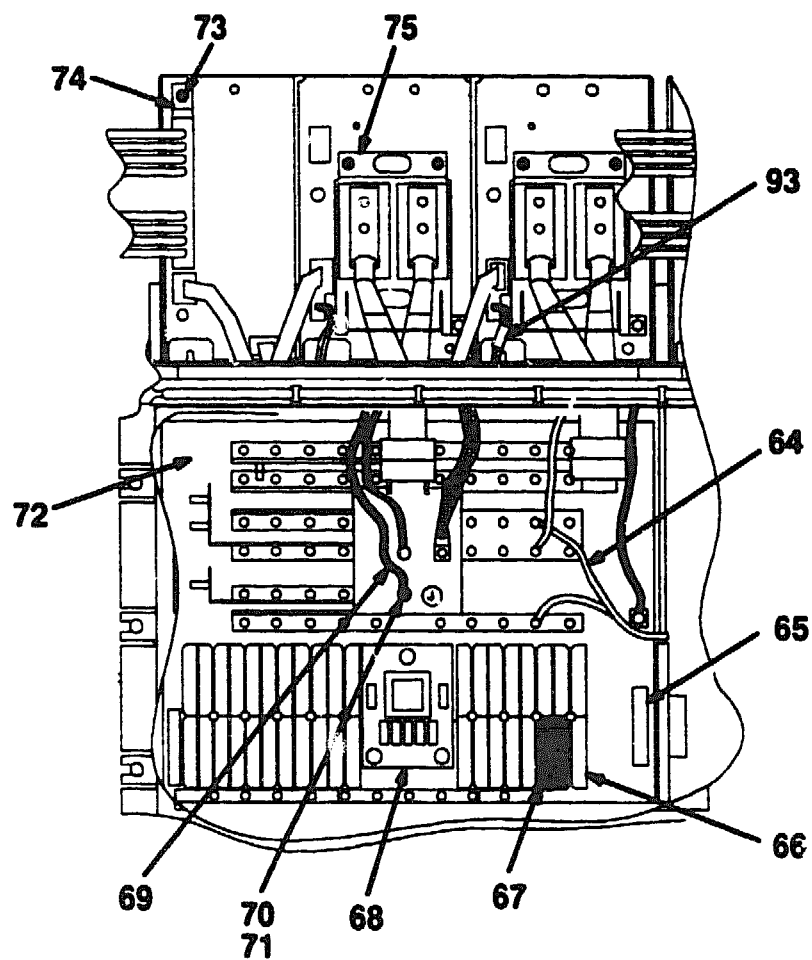


6500X-01C-iL

REAR VIEW - SHOWN WITH END PANELS REMOVED

Figure 1. System Assembly, VAX 6000-500 (Sheet 4 of 5)

PARTS LIST



A

6500X-01D-IL

Figure 1. System Assembly, VAX 6000-500 (Sheet 5 of 5)

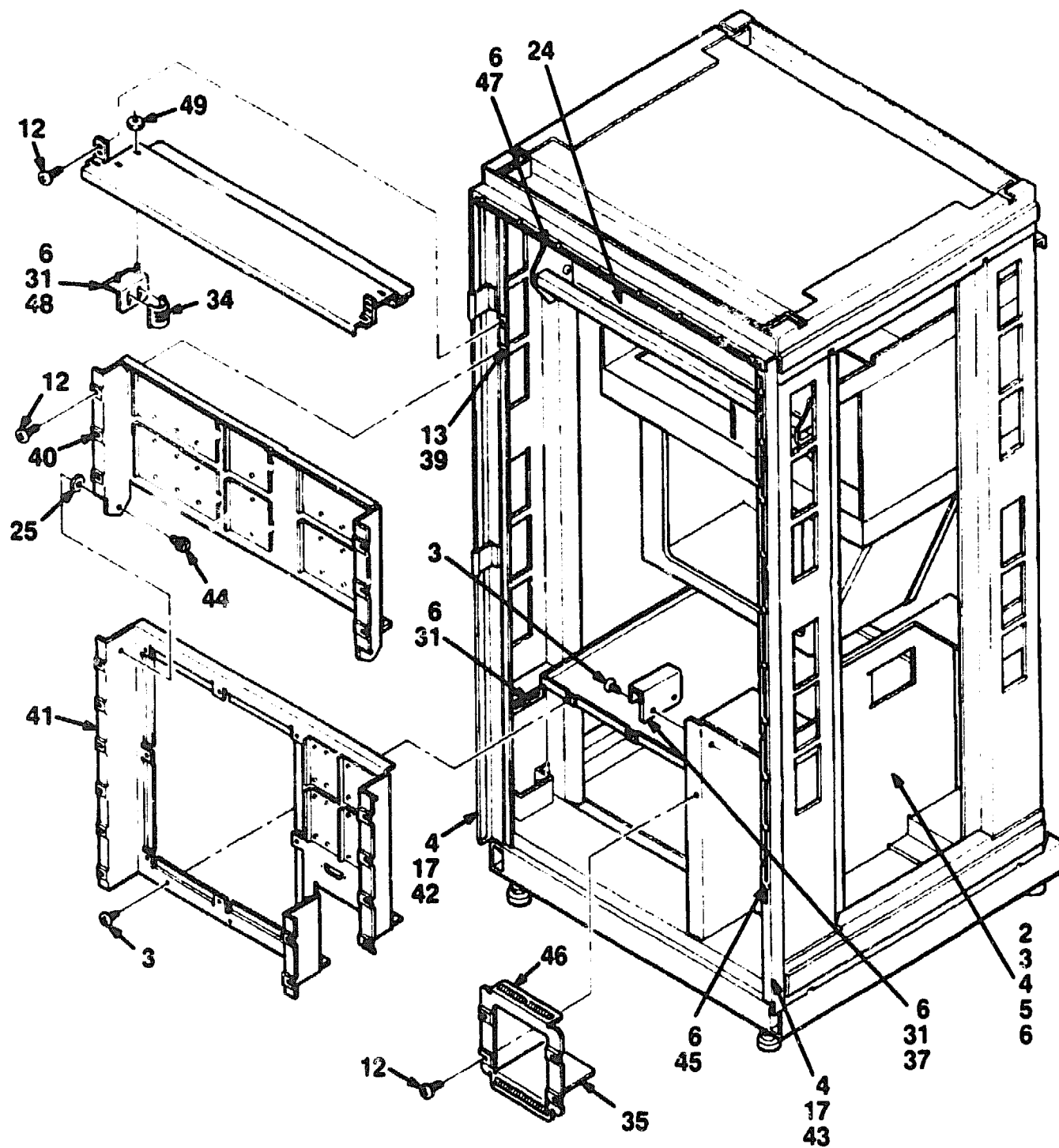
PARTS LIST



FIG. & ITEM NO.	DESCRIPTION	DEC PART NO.	B ECO CUT-IN H9657 00001	USED ON CODE	REF FIG NO.
1-	SYSTEM ASSEMBLY, VAX 8000-500				
	Code A - Used On H9657-CB (Domestic)	H9657-CB		A	
	Code B - Used On H9657-CA (Non-Domestic)	H9657-CA		B	
1	*CABINET ASSEMBLY, MECHANICAL	70-24614-02			2
2	*Panel, Kick	70-21704-03			
3	*DOOR ASSEMBLY, FRONT	70-24623-01			3
4	*Logo, Corporate	74-31616-02			
5	*Bezel	74-35369-01			
6	*Panel Assembly, End	70-19485-00			
7	*Support Assembly, Right	70-27715-01			
8	*Nut, Kep No. 1/4-20	90-08203-00			
9	*Support Assembly, Left	70-27818-01			
10	*Cover, Bulkhead Assembly	70-27864-01			
11	*DOOR ASSEMBLY, REAR	70-24124-01			4
12	*Washer, Flat	90-06664-00			
13	*Screw, Sems Pan Hd No. 10-32 x 3/4	90-09984-04			
14	*Keys, Plastic	12-17119-01			
15	*Tie, Cable	90-07880-00			
16	*Label, "822BA Warning"	36-27020-01			
17	*Cover, Top Weldment	70-23397-01			
18	*Extension Assembly, Front	70-24612-01			
19	*Gasket Assembly	70-19605-02			
20	*Clip, Nylon RF Gasket	12-21535-01			
21	*Transformer, 3-Phase P=415 50 Hz 4.5 KVA	16-26393-01		A	
22	*Label, "Ground"	36-12680-02			
23	*Cable Assembly, W/Wrist Strap	12-24023-01			
24	*Panel, Front	74-35215-02		A	
	*Panel, Front	74-35215-01		B	
25	*Harness Assembly, Wire 06 Cond 18 AWG	17-02759-01			
26	*Screw, Sems Hex Hd No. 1/4-20 x 1/2	90-09988-00		A	
27	*Harness Assembly, Wire	17-01501-01			
28	*Harness Assembly	17-01815-01		A	
29	*Gasket Assembly	70-19605-01			
30	*Bracket, Filler Angle Seal	74-35919-01			
31	*Label, "VAX8000 XMI"	36-33598-01			
32	*Baffle Assembly	70-27670-01			
33	*Cover Assembly, BI Card Cage	70-24389-01			
34	*Nut, Kep No. 4-40	90-06557-00			
35	*Harness Assembly, Wire	17-01499-01			
36	*CONTROL ASSEMBLY, SYSTEM	70-27867-01			5
37	*Label, "Control Panel"	36-23595-02		A	
38	*Harness Assembly, Wire 4 Cond	17-01844-01			
39	*Bracket, Mounting	90-10624-01			
40	*Screw, Sems Phl Pan Hd No. 6-32 x 5/16	90-09984-07			

FIG. & ITEM NO.	DESCRIPTION	DEC PART NO.	ECO CUT-IN H9657 00001	USED ON CODE	REF FIG NO.
1-					
41	*Harness Assembly, Wire 6 Cond	17-01446-01			
42	*Cover Assembly, XMI Card Cage	70-24390-01			
43	*Tray Assembly, Cable	70-25930-01			
44	*Screw, Sems Hex Hd No. 10-32 x 1/2	90-09988-05			
45	*Retainer, U-Nut No. 10-32	90-07786-00			
46	*Grommet, Caterpillar	90-07035-00			
47	*Extension Assembly, Rear	70-24613-01			
48	*Screw, Sems Hex Hd No. 8-32 x 3/8	90-09988-08			
49	*POWER/LOGIC BOX ASSEMBLY	H7206-B			6
50	*Cable Assembly, Flat 34 Cond	17-01666-01			
51	*Gasket, RFI Shield	12-28686-14			
52	*OUTPUT ASSEMBLY, V.E. POWER (Domestic)	H405-F		A	7
	*OUTPUT ASSEMBLY, V.E. POWER (Non-Domestic)	H405-E		B	7
53	*Gasket, RFI Shield	12-28686-17			
54	*Retainer, Cable Cover	74-41194-01			
55	*Gasket, RFI Shield	12-28686-16			
56	*Screw Assembly, Lock	90-08451-00			
57	*Cable Assembly, 4 Cond	17-01567-01			
58	*Guide, Cable (Weldment)	70-25525-01			
59	*Screw, Sems Pan Hd No. 10-32 x 3/8	90-09984-13			
60	*Panel, I/O Blower	74-35004-01			
61	*Clip, Flat Cable	12-15843-01			
62	*Blower, Backward 24 VDC	12-27848-01			
63	*Harness Assembly, Wire 9 Cond	17-01570-01			
64	*Harness Assembly, Wire 2 Cond 28 AWG	17-02521-01			
65	*Harness Assembly, Wire 1 Cond 24 AWG	17-02500-01			
66	*Cable Assembly, 11 Cond Molded 28-24 AWG	17-01496-02			
67	*Jumper Assembly	17-01149-01			
68	*Module, Clock Arbiter	54-18172-01			
69	*Harness Assembly, Wire	17-01662-01			
70	*Nut, Hex Ext Tooth Lockwasher No. 8-32	90-06563-00			
71	*Washer, Flat	90-06660-00			
72	*BUS BAR ASSEMBLY, XMI	70-24902-02			10
73	*Nut, Hex Ext Tooth Lockwasher No. 6-32	90-06560-00			
74	*Bracket	74-35973-01			
75	*Cover, 6 Watt Regulator	74-35974-01			
76	*Cable Assembly, Flat 34 Cond	17-01497-02			
77	*REGULATOR ASSEMBLY, 300 WATTS	H7215-A			11
78	*REGULATOR ASSEMBLY, 600 WATTS	H7214-A			12
79	*REGULATOR ASSEMBLY, 3.3 VOLT	H7242-00			13
80	*Tie, Cable	90-07031-00			

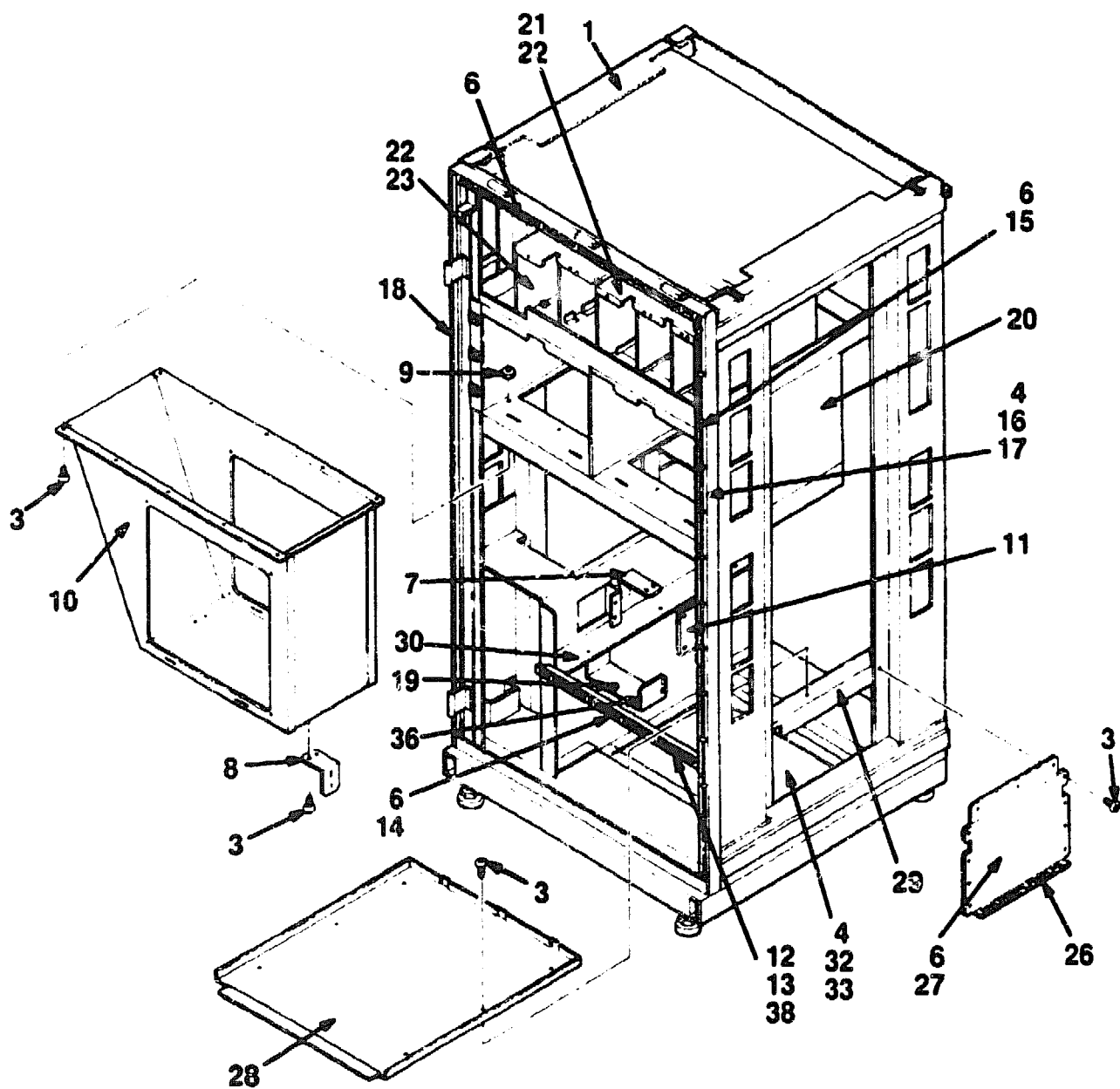
FIG. & ITEM NO.	DESCRIPTION	DEC PART NO.	ECO CUT-IN H9857 00001	USED ON CODE	REF FIG NO.
1-					
81	*Sensor, Air Flow Temp	12-25024-11			
82	*Bracket, Front Sensor	74-34752-01			
83	*Cable Assembly, Flat 34 Cond	17-01498-01			
84	*Cable Assembly, 20 Cond	17-01568-02			
85	*Grommet, Strip	90-09718-00			
86	*Clip, Flat Cable	12-15843-03			
87	*Harness Assembly, Wire 4 Cond	17-01447-01			
88	*Bulkhead, ECM	12-36141-02			
89	*Clamp, Cable	90-09636-00			
90	*Screw, Sems Pan Hd No. 6-32 x 7/16	90-09984-02			
91	*Retainer, Bezel	74-35376-01			
92	*Washer, Flat	90-06668-00			
93	*Label, "Cable ID Tag"	36-20866-01			
	ITEMS (Not Shown)				
	*Label, "Direct Thermal"	36-28231-08			
	*Key, Cabinet Door	12-26339-01			
	*Connector, D-Sub 15 Position	12-22196-02			
	*Cable Assembly, 08 Conductor Molded Shielded	17-00313-02			
	*Label, "Regulatory System Electrical Data"	36-25189-03		A	
	*Panel, Sub Double	74-26407-01			
	*Label, "PTT Approval VAX 6300 German"	36-25988-05		A	
	*Label, "FTZ, VAX 6300"	36-21129-20		A	
	*Label, "Postcard FTZ, VAX 6310, VAX 6300"	36-30422-13		A	
	*Label "Control Panel"	36-23595-01		B	
	*Label, "FCC Class A Processor"	36-17880-02		B	
	*Label, "Assembly 04, 01"	36-18377-05		B	



6500X-02-SC

Figure 2. Cabinet Assembly, Mechanical (Sheet 1 of 2)

PARTS LIST



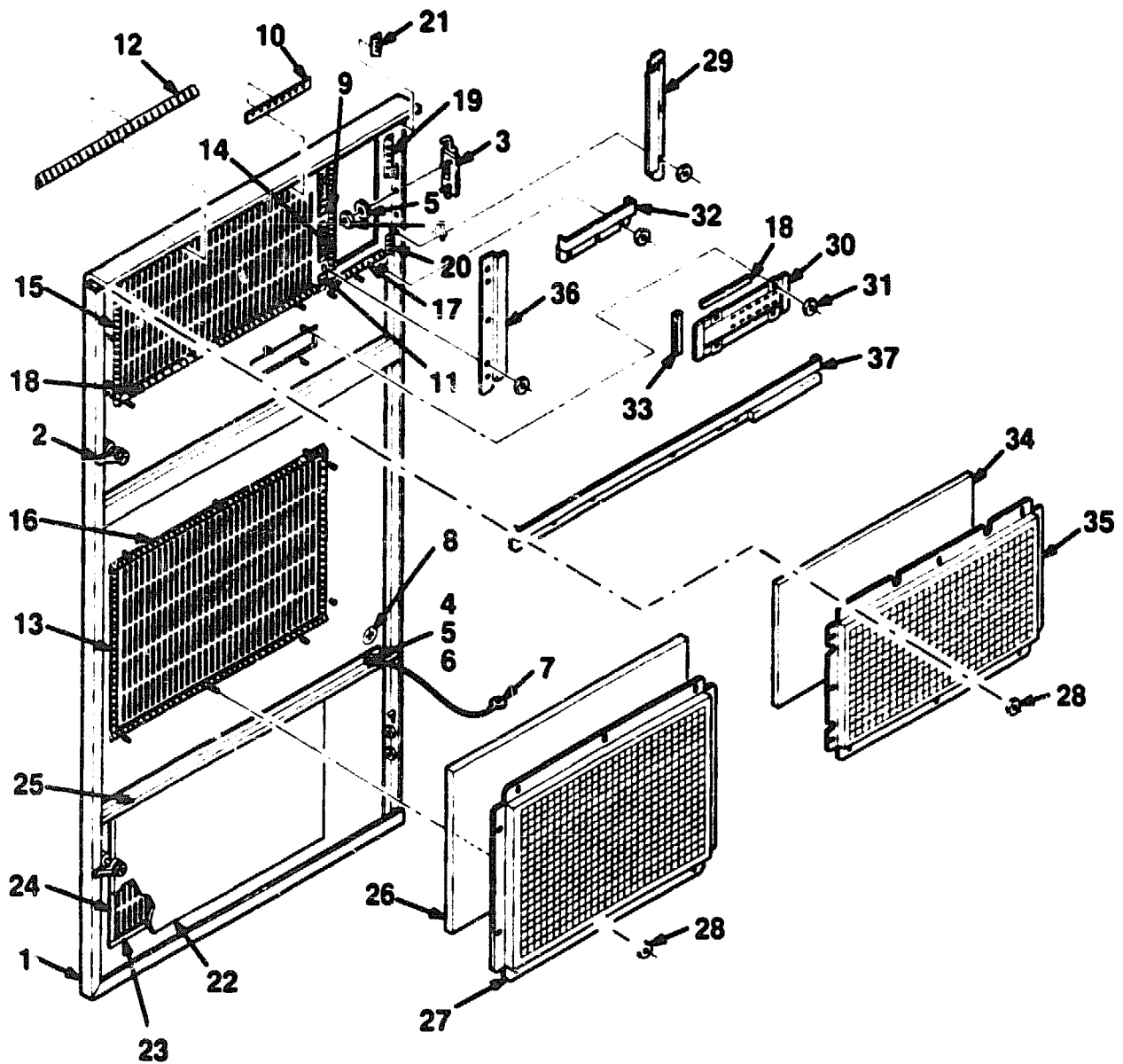
6500X-02A-SC

Figure 2. Cabinet Assembly, Mechanical (Sheet 2 of 2)

PARTS LIST

FIG.& ITEM NO.	DESCRIPTION	DEC PART NO.	ECO CUT-IN 70-24614 00003	USED ON CODE	REF FIG NO.
2-	CABINET ASSEMBLY, MECHANICAL	70-24614-02			1
1	*Frame Assembly, 1.5 Bay	70-24742-02			
2	*Rail, Third Support	74-34756-01			
3	*Screw, Sems Truss Hd No. 10-32 x 3/8	90-00049-04			
4	*Screw, Sems Hex Hd No. 1/4-20 x 1/2	90-09988-00			
5	*Gasket Assembly	70-19605-06			
6	*Clip, Nylon RF Gasket	12-21535-01			
7	*Bracket, Blower Structure (LH)	74-35050-01			
8	*Bracket, Blower Structure (RH)	74-35049-01			
9	*Nut, Kep No. 10-32	90-06565-00			
10	*Structure Assembly, Blower	70-24611-01			
11	*Bracket, Front Extension	74-35834-01			
12	*Screw, Self-Tap Truss Hd No. 10 x 1/2	90-00063-39			
13	*Retainer, U-Nut No. 10-32	90-07786-00			
14	*Gasket Assembly	70-19605-08			
15	*Gasket Assembly	70-19605-26			
16	*Seal, Front Angle Single	74-35039-01			
17	*Nut, Kep No. 1/4-20	90-08203-00			
18	*Seal, Angle Weldment	70-24621-01			
19	*Key, Button	74-14318-00			
20	*Cage (Weldment)	70-24410-01			
21	*Chassis, XMI (Weldment)	70-24615-01			
22	*Rivet, Blind Dome	90-00030-01			
23	*Chassis, BI (Weldment)	70-24616-01			
24	*Tube (Weldment)	70-24391-01			
25	*Washer, Flat Nylon	90-00003-01			
26	*Panel (RH)	74-34410-10			
27	*Gasket Assembly	70-19605-04			
28	*Tray Assembly	70-24136-01			
29	*Bracket, RH	74-34409-01			
30	*Bracket, LH	74-34408-01			
31	*Gasket Assembly	70-19605-30			
32	*Screen, Bottom	74-33015-01			
33	*Rivet, Blind Dome	90-00030-21			
34	*Shield, Spring	74-26725-01			
35	*Plate, H7206 Mounting	74-34982-01			
36	*Support, H7206 Ret	74-34110-01			
37	*Bracket, Filler	74-35160-01			
38	*Seal, Front	74-35214-01			
39	*Plane Assembly, Ground	70-24409-01			
40	*Frame Assembly, Full Width Hinged	70-24318-01			
41	*I/O Assembly, Lower	70-24610-01			
42	*Seal, Rear Switch Angle (Weldment)	70-19581-02			

FIG. & ITEM NO.	DESCRIPTION	DEC PART NO.	ECO CUT-IN 70-24614 00003	USED ON CODE	REF FIG NO.
2-					
43	*Seal, Rear Single Angle	74-26638-01			
44	*Screw, Captive Shoulder No. 10-32 X 3/8	12-27250-01			
45	*Gasket Assembly	70-19605-20			
46	*Gasket, RFI Shield	12-28685-01			
47	*Gasket Assembly	70-19605-13			
48	*Bracket, Hinged I/O Ground	74-35161-01			
49	*Nut, Hex Ext Tooth Lockwasher No. 6-32	90-06560-00			



6500X-03-SC

Figure 3. Door Assembly, Front

PARTS LIST



FIG. & ITEM NO.	DESCRIPTION	DEC PART NO.	ECO CUT-IN 70-24623 00004	USED ON CODE	REF FIG NO.
3-	DOOR ASSEMBLY, FRONT	70-24623-01			1
1	*Door, Front (Weldment)	70-24622-01			
2	*Latch, Turn-Grip	12-24095-01			
3	*Hinge Assembly (LH)	12-20203-01			
4	*Nut, Kep No. 10-32	90-06565-00			
5	*Washer, Flat	90-06664-00			
6	*Washer, External Tooth Lock	90-07651-00			
7	*Strap, Ground	12-13756-07			
8	*Label, "Ground"	36-13272-00			
9	*Strip, Contact 2.66 Inches Long	12-28434-06			
10	*Strip, Contact 3.465 Inches Long	12-28434-07			
11	*Strip, Contact 0.465 Inches Long	12-28434-08			
12	*Gasket, RFI Shield	12-28686-02			
13	*Gasket, RFI Shield	12-28686-03			
14	*Gasket, RFI Shield	12-28686-04			
15	*Gasket, RFI Shield	12-28686-05			
16	*Gasket, RFI Shield	12-28686-06			
17	*Gasket, RFI Shield	12-28686-07			
18	*Gasket, RFI Shield	12-28686-08			
19	*Gasket, RFI Shield	12-28686-09			
20	*Gasket, RFI Shield	12-28686-10			
21	*Gasket, RFI Shield	12-28686-11			
22	*Filter, Foam Air	12-11255-25			
23	*Strip, Left And Right	74-13707-01			
24	*Strip	74-13707-00			
25	*Stiffener, Horizontal	74-35042-01			
26	*Filter, Foam Air	12-11255-24			
27	*Cover, Inlet	74-35887-01			
28	*Nut, Hex Ext Tooth Lockwasher No. 8-32	90-06563-00			
29	*Seal, Right Exhaust	74-35843-01			
30	*Carrier, Number Slugs	74-38221-01			
31	*Nut, Hex Ext Tooth Lockwasher No. 6-32	90-06560-00			
32	*Seal, Bottom Exhaust	74-35846-01			
33	*Gasket, RFI Shield	12-28686-14			
34	*Filter, Foam Air	12-11255-23			
35	*Cover, Exhaust	74-35881-01			
36	*Seal, Left Exhaust	74-35845-01			
37	*Seal, Top Exhaust	74-35844-01			

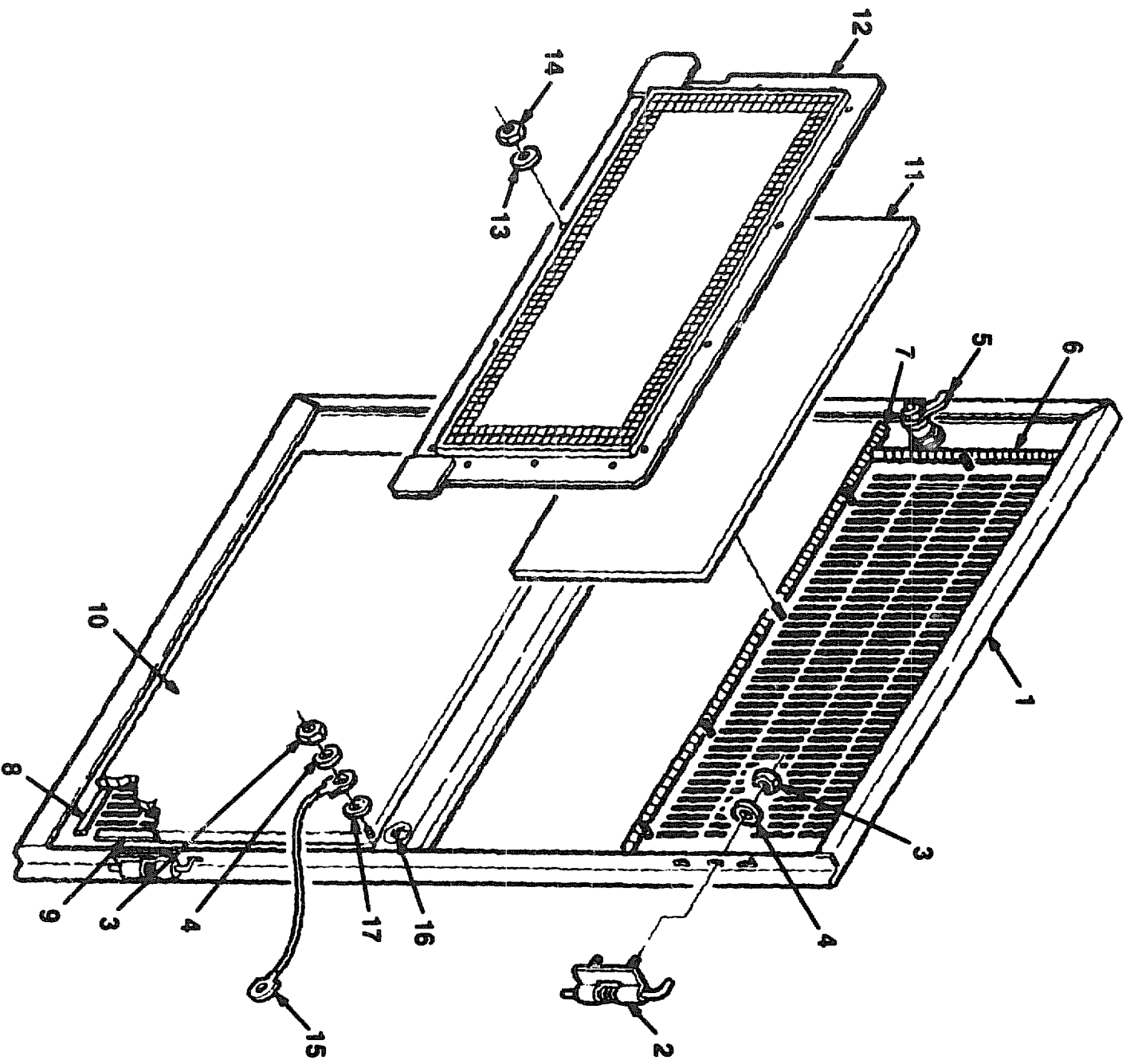


Figure 4. Door Assembly, Rear

6500X-04-SC

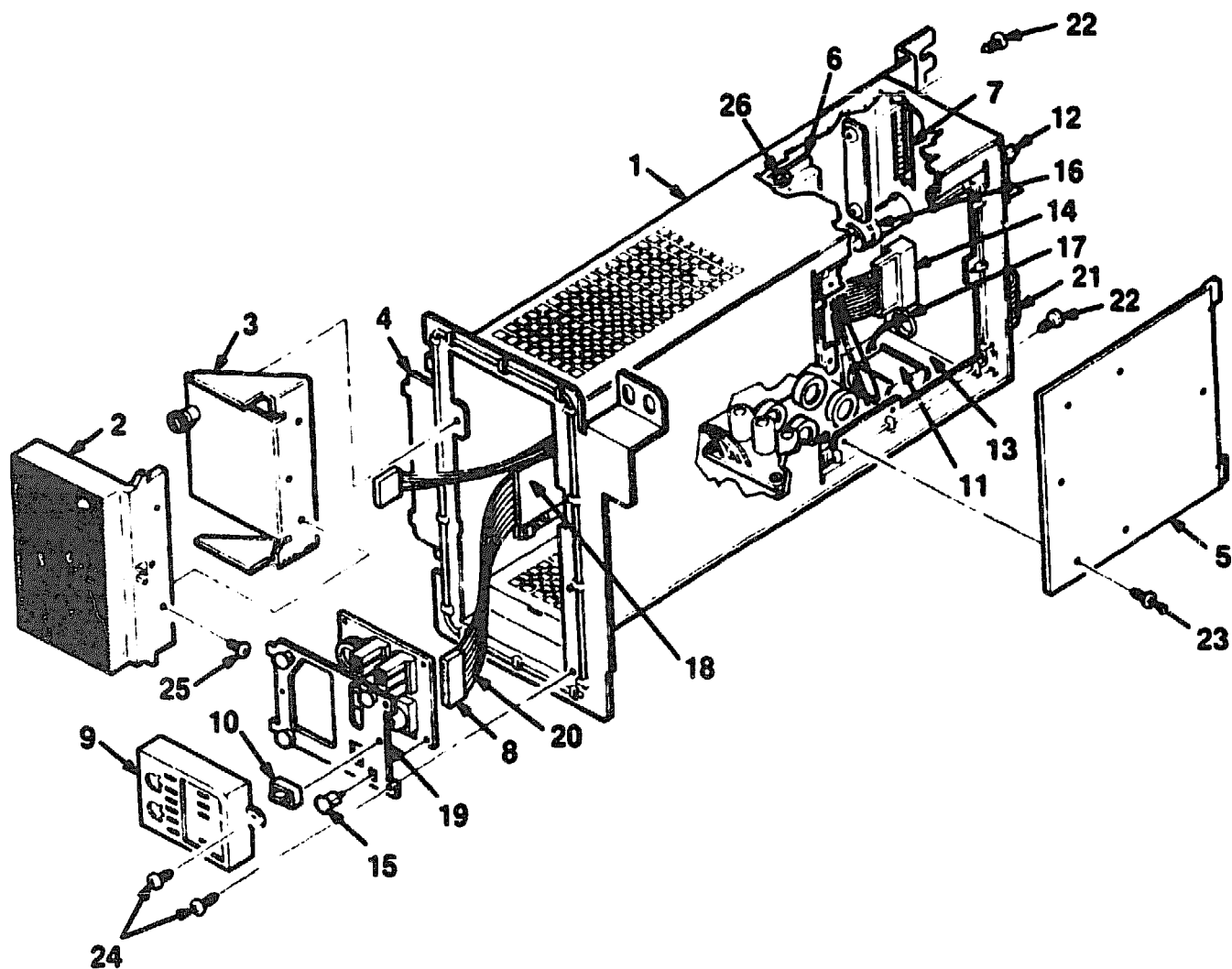
PARTS LIST

- 15 -

IPB-6500X

1

FIG. & ITEM NO.	DESCRIPTION	DEC PART NO.	ECO CUT-IN 70-24124 00003	USED ON CODE	REF FIG NO.
4-	DOOR ASSEMBLY, REAR	70-24124-01			1
1	*Door, Rear (Weldment)	70-24125-01			
2	*Hinge Assembly, Pull (LH)	12-20203-01			
3	*Nut, Kep No. 10-32	90-06565-00			
4	*Washer, Flat	90-06664-00			
5	*Latch, Turn-Grip	12-24095-01			
6	*Gasket, BECU	12-28686-12			
7	*Gasket, RFI Shield	12-28686-02			
8	*Strip	74-13707-03			
9	*Strip, Velcro	74-13707-07			
10	*Filter, Foam Air	12-11255-17			
11	*Filter, Foam Air	12-11255-22			
12	*Cover, Rear	70-24934-01			
13	*Washer, Flat	90-06660-00			
14	*Nut, Hex Ext Tooth Lockwasher No. 8-32	90-06563-00			
15	*Strap, Ground	12-13756-09			
16	*Washer, External Tooth Lock	90-07651-00			
17	*Label, "Ground"	36-13272-00			

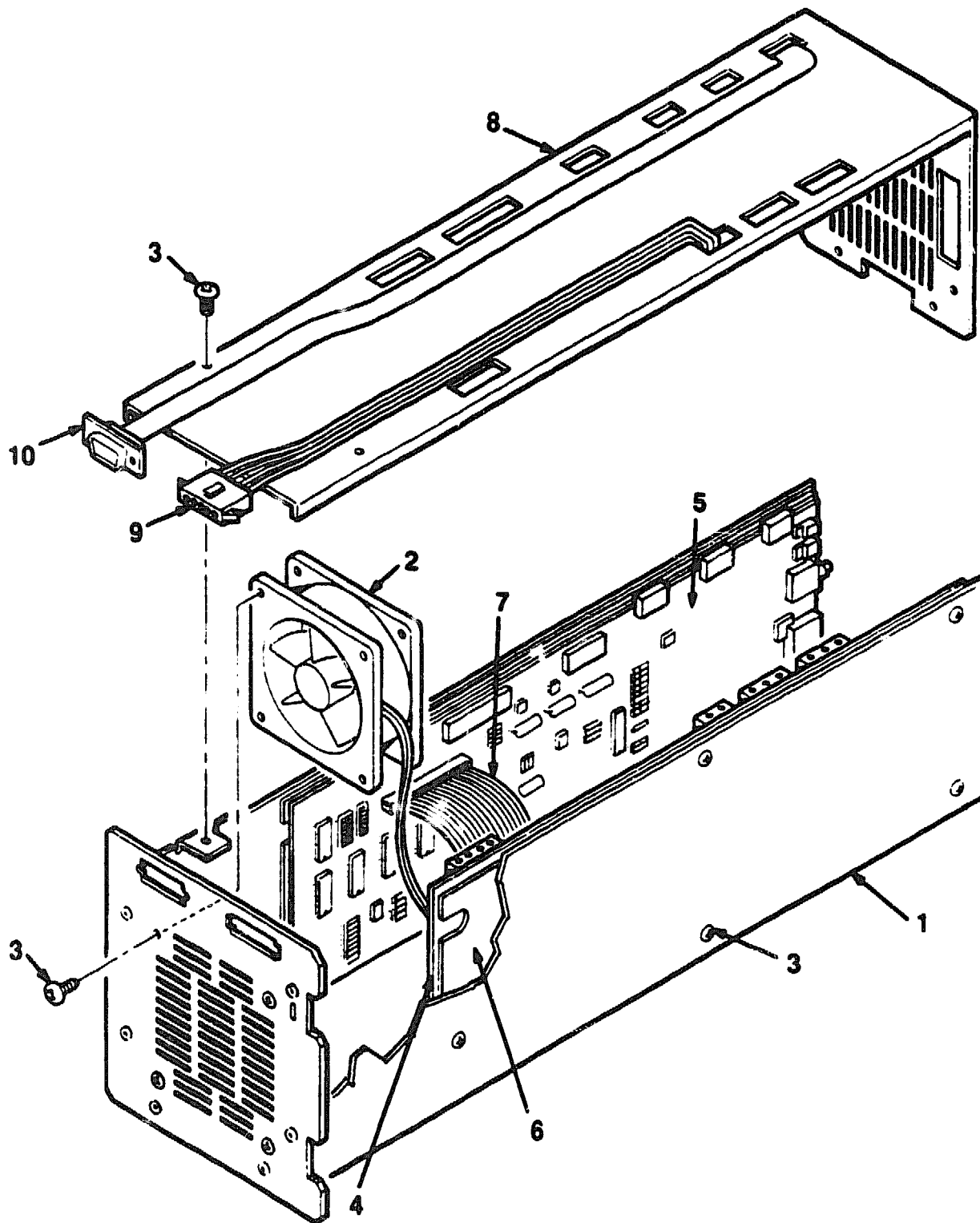


6500X-05-SC

Figure 5. Control Assembly, System

PARTS LIST

FIG.& ITEM NO.	DESCRIPTION	DEC PART NO.	A ECO CUT-IN 70-27867 00000	USED ON CODE	REF FIG NO.
5-	CONTROL ASSEMBLY, SYSTEM	70-27867-01			1
1	*Control Assembly, Riveted System	70-27866-01			
2	*Bezel, TK Filler	74-39151-01			
3	*Bracket, Filler Bezel Mounting	74-41494-01			
4	*Shield	74-41410-01			
5	*Panel, Access	74-41224-01			
6	*Guide, Cable	74-41411-01			
7	*Gasket, EMI	74-41157-05			
8	*Module, Control Panel	54-16574-01			
9	*Bezel Assembly, Control	70-22117-01			
10	*Button, Reset	74-33423-01			
11	*Battery, 3Cell 3.75V .18MA Nicad	12-19245-00			
12	*Module, XTC XMI Timing Control	20-29176-02			
13	*Module, TK Filter Output	20-28997-01			
14	*Connector, PCB Header 26 Pin	12-28804-01			
15	*Standoff, PC Board	90-10568-01			
16	*Tie, Cable	90-07880-00			
17	*Grommet, Round Rubber	90-07015-00			
18	*Plate, Housing	74-35920-01			
19	*Plate, Control Panel	74-35925-01			
20	*Cable Assembly, 20 Cond Flat	17-01818-01			
21	*Cable Assembly, 20 Cond Flat	17-01818-01			
22	*Screw, Sems Pan Hd No. 6-32 x 1/2	90-09984-03			
23	*Screw, Sems Phl Pan Hd No. 6-32 x 5/16	90-09984-07			
24	*Screw, Sems Phl Pan Hd No. 4-40 x 1/4	90-09643-02			
25	*Screw Machine Flat Hd No. 6-32 x 1/4	90-06020-02			
26	*Nut, Hex Ext Tooth Lockwasher No. 6-32	90-06560-00			



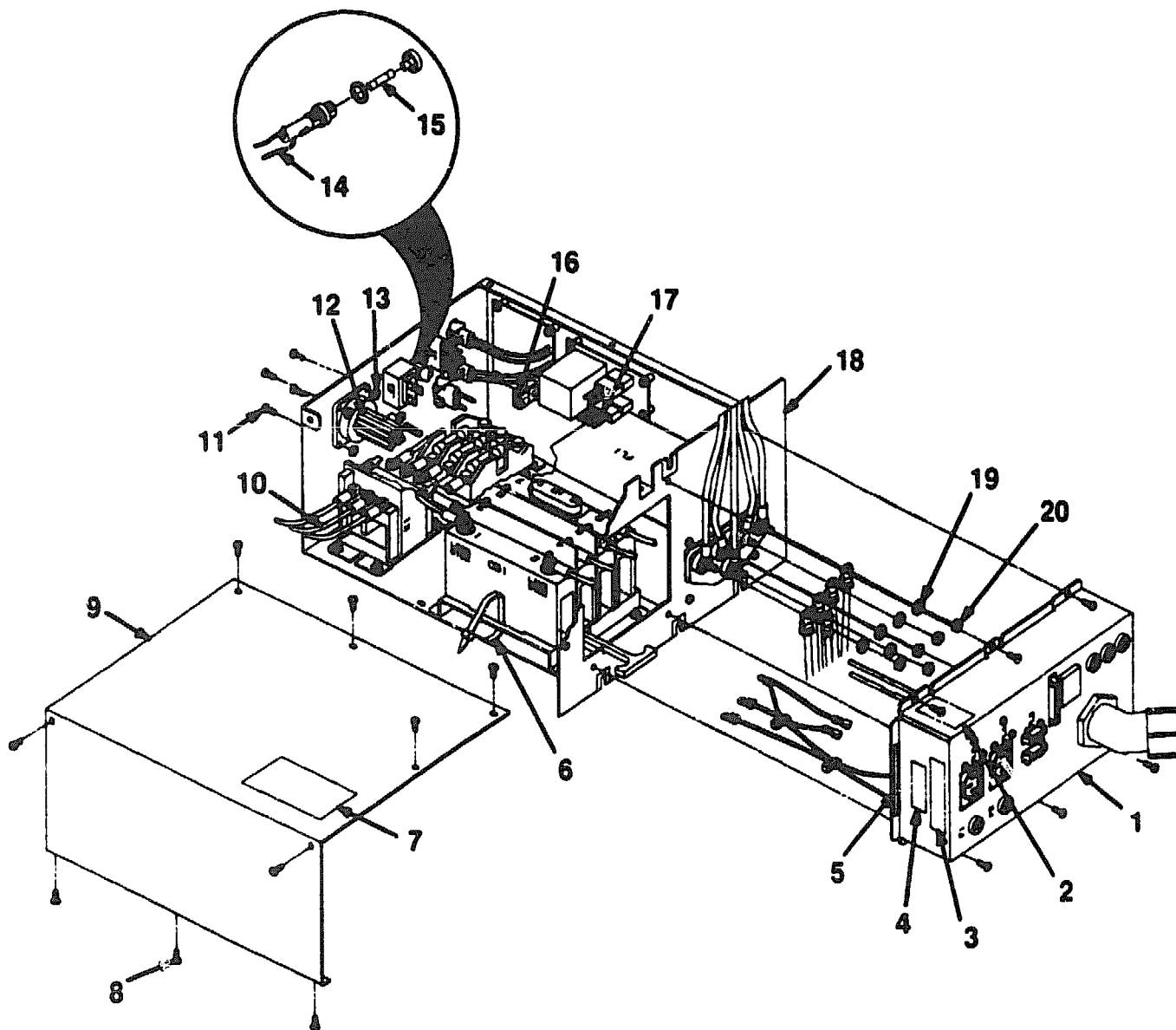
6500X-06-SC

Figure 6. Power/Logic Box Assembly

PARTS LIST



FIG.& ITEM NO.	DESCRIPTION	DEC PART NO.	ECO CUT-IN H7206 00001	USED ON CODE	REF FIG NO.
6-	POWER/LOGIC BOX ASSEMBLY	H7206-B			1
1	*Chassis Assembly	70-26905-01			
2	*Fan, Axial 45CFM 24VDC	12-24701-06			
3	*Screw, Sems Pan Hd No. 6-32 x 5/16	90-09701-00			
4	*Module, AC Input/Fan Drive	54-18169-01			
5	*Module, H7206 Logic	54-19766-01			
6	*Shield, PC Module	74-34053-01			
7	*Harness Assembly, Wire (J7,J8,J17)	17-01445-01			
8	*Cover, H7206B	74-39228-01			
9	*Harness Assembly, Wire 4 Cond 16 AWG	17-02475-01			
10	*Harness Assembly, Wire 12 Cond 24 AWG	17-02494-01			
	LABELS (Not Shown)				
	*Label, "Kapton Blank"	36-27920-01			
	*Label, "CSI"	36-27922-01			
	*Label, "Serial/Power USA, UR/CSA"	36-17674-46			
	*Label, "Blank"	36-27921-01			
	*Label, "Fuse Warning"	36-25176-01			



**NOTE: SHOWN FOR REFERENCE ONLY.
UNIT IS NOT TO BE DISASSEMBLED IN FIELD.**

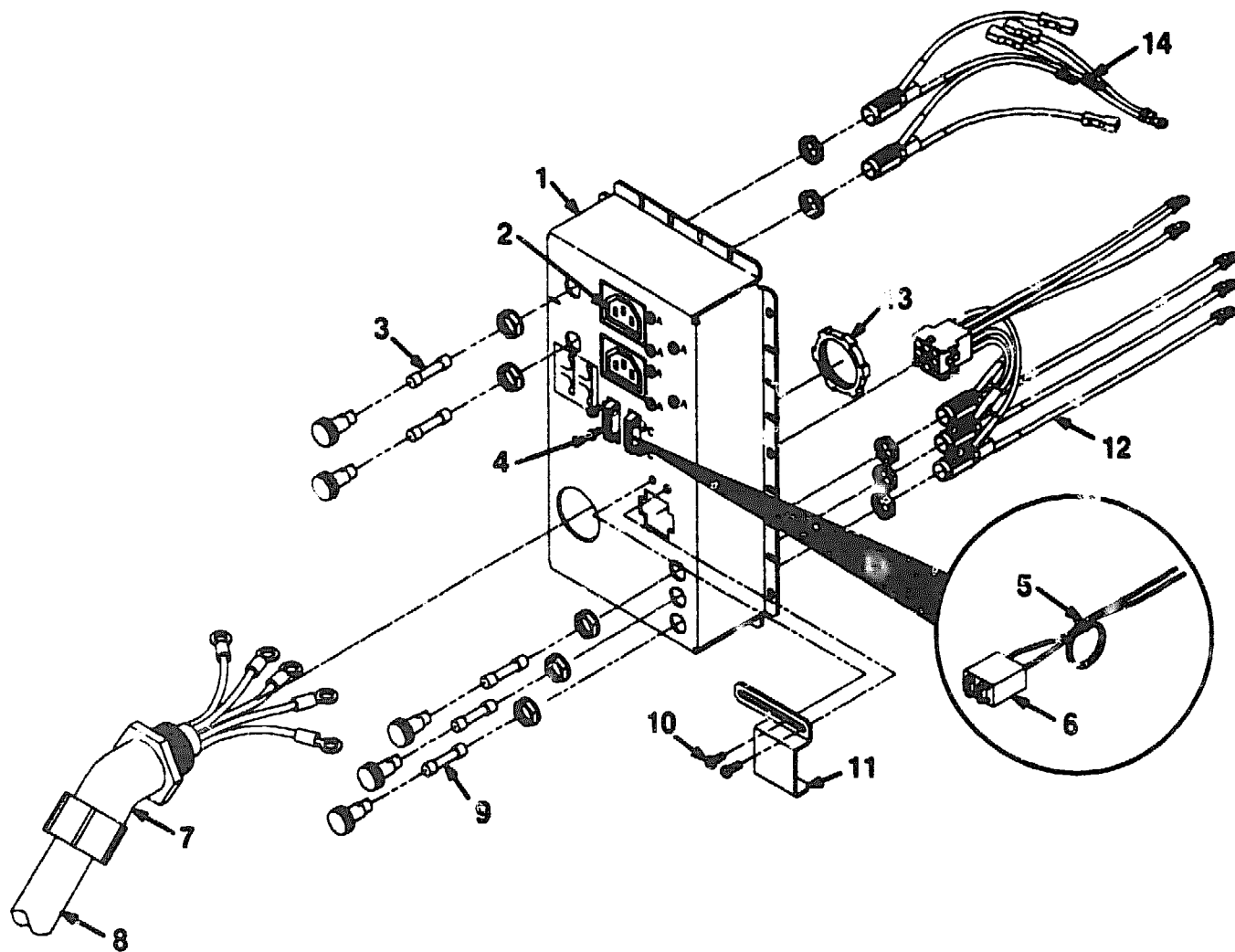
6500X-07-IL

Figure 7. Output Assembly, V.E. Power

PARTS LIST



FIG. & ITEM NO.	DESCRIPTION	DEC PART NO.	ECO CUT-IN H405 00000	USED ON CODE	REF FIG NO.
7-	OUTPUT ASSEMBLY, V.E. POWER (Domestic)	H405-F		A	1
	OUTPUT ASSEMBLY, V.E. POWER (Non-Domestic)	H405-E		B	1
1	*PANEL ASSEMBLY, V.E. COMPONENT	70-22814-02		A	8
	*PANEL ASSEMBLY, V.E. COMPONENT	70-22814-01		B	8
2	*Label, "Calypso Bulkhead H405-F"	36-26181-04		A	
	*Label, "Calypso Bulkhead H405-E"	36-26181-03		B	
3	*Label, "Serial/Power Rating Non-Domestic"	36-26211-11		A	
	*Label, "Serial/Power Rating Domestic"	36-26211-12		A	
	*Label, "Serial/Power Rating Domestic"	36-26211-10		B	
4	*Label, "Fuse Warning French/English"	36-26214-01			
	*Label, "Caution, Replace Fuse"	36-17615-01		A	
5	*Label, "Bar Code, Polyester"	36-26516-02			
	*Label, "Direct Thermal"	36-17615-01			
6	*Tie, Cable	90-07032-00			
7	*Label, "Fuse Warning"	36-25176-01		A	
8	*Screw, Self-Tap Pan Hd No. 6 x 1/4	90-00062-10			
9	*Cover Assembly, H405 Chassis	74-38860-01			
10	*Harness Assembly, Wire 12/14 AWG	17-02262-01		A	
11	*Screw, Self-Tap Pan Hd No. 6 x 1/2	90-00062-14			
12	*Harness Assembly, Wire 7 Cond 14 AWG	17-02402-01		A	
	*Harness Assembly, Wire 13 Cond 14 AWG	17-02400-01		B	
13	*Nut, Kep No. 6-32	90-10586-02			
14	*Harness Assembly, Wire 4 Cond 16 AWG	17-02406-01			
15	*Fuse, 3AG 2A 250V Slow-Blow	90-07216-00			
16	*Harness Assembly, Wire 5 Cond 18 AWG	17-02399-01			
17	*Harness Assembly, Wire 4 Cond 18 AWG	17-02407-01		A	
	*Harness Assembly, Wire 4 Cond 18 AWG	17-02401-01		B	
18	*CHASSIS ASSEMBLY, V.E.	70-22815-02		A	9
	*CHASSIS ASSEMBLY, V.E.	70-22815-01		B	9
19	*Washer, Flat	90-06664-00			
20	*Nut, Kep No. 10-32	90-06565-00			
	CABLE (Not Shown)				
	*Harness Assembly, 3 Cond 12 AWG	17-02403-01		A	



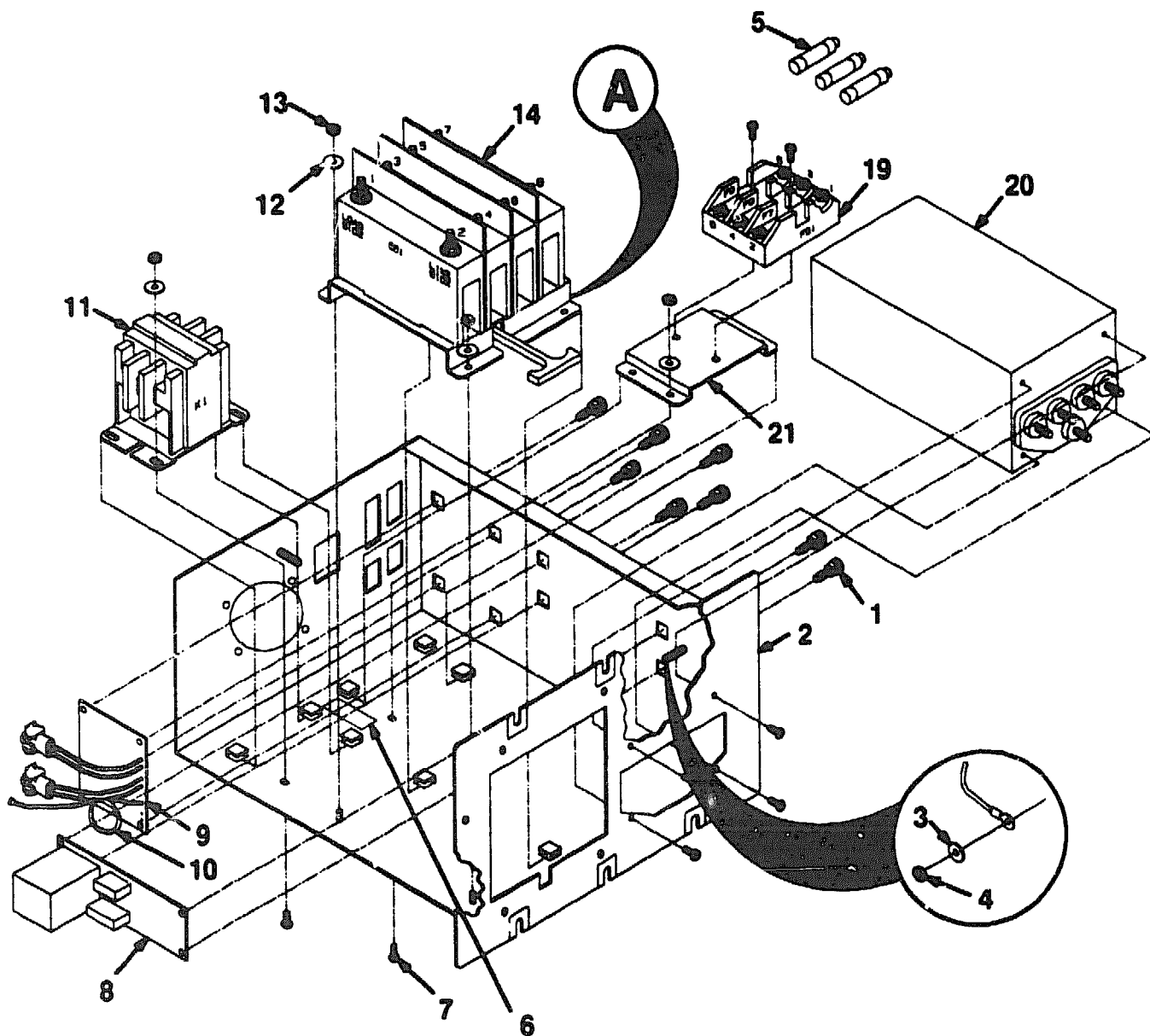
NOTE: SHOWN FOR REFERENCE ONLY.
UNIT IS NOT TO BE DISASSEMBLED IN FIELD.

6500X-08-IL

Figure 8. Panel Assembly, V.E. Component

PARTS LIST

FIG.& ITEM NO.	DESCRIPTION	DEC PART NO.	ECO CUT-IN 70-22814 00000	USED ON CODE	REF FIG NO.
8-	PANEL ASSEMBLY, V.E. COMPONENT	70-22814-01		B	7
	PANEL ASSEMBLY, V.E. COMPONENT	70-22814-02		A	7
1	*Panel Assembly, H405	70-22714-01		B	
	*Panel Assembly, H405	70-22714-02		A	
2	*Filter, Line EMI/RFI 47-83Hz	12-28355-02			
3	*Fuse, 3AB 10A 250V Norm-Blow	90-08390-00			
4	*Screw, Self-Tap Pan Hd No. 4 x 1/4	90-00062-01			
5	*Tie, Cable	90-07032-00			
6	*Filter, Power Bus	12-21099-02			
7	*Strain Relief Asser.bly, Power Cord	12-14574-03		A	
	*Strain Relief Assembly, Power Cord	12-14574-00		B	
8	*Harness Assembly, Wire 5 Cond 12 AWG	17-01295-01		A	
	*Harness Assembly, Wire 5 Cond 10 AWG	17-01806-01		B	
9	*Fuse, 3AG 1A 250V Slow-Blow	90-07212-00			
10	*Screw, Self-Tap Pan Hd No. 6 x 1/4	90-00062-10			
11	*Retainer, Dust Cover	74-38859-01			
12	*Harness Assembly, Wire 10 Cond 16/18 AWG	17-02449-01			
13	*Nut, Lock No. 14 x 3/4	90-09309-01		A	
	*Nut, Lock No. 1-11 x 1/2	90-09309-02		B	
14	*Harness Assembly, Wire 6 Cond 14 AWG	17-02404-01			



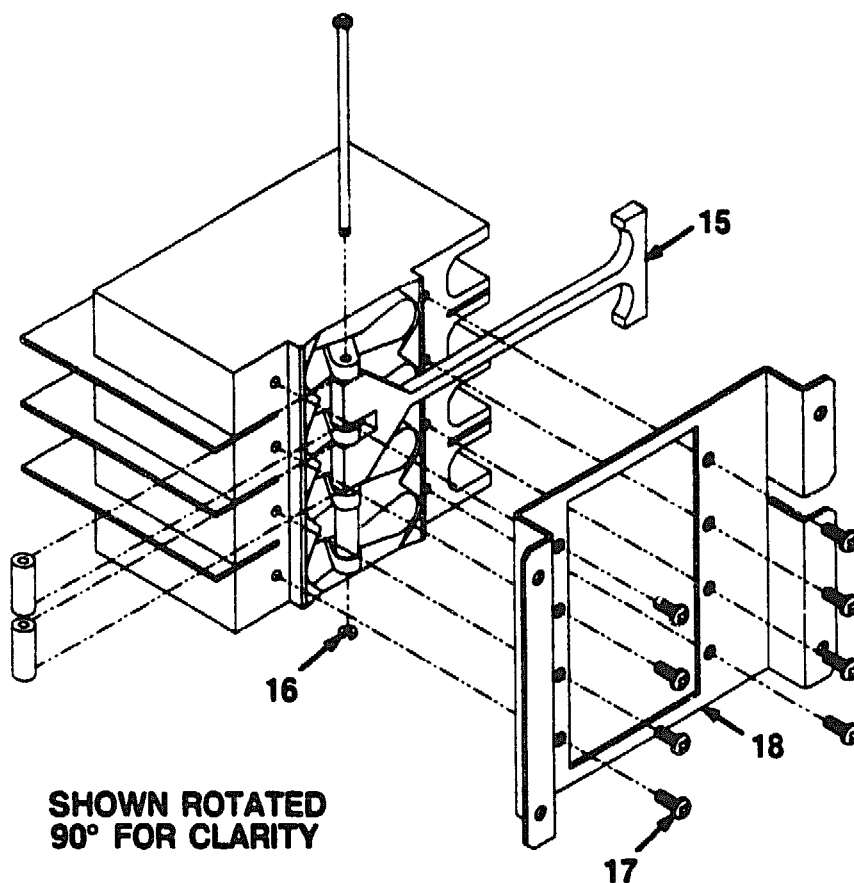
**NOTE: SHOWN FOR REFERENCE ONLY.
UNIT IS NOT TO BE DISASSEMBLED IN FIELD.**

6500X-09-IL

Figure 9. Chassis Assembly, V.E. (Sheet 1 of 2)

PARTS LIST



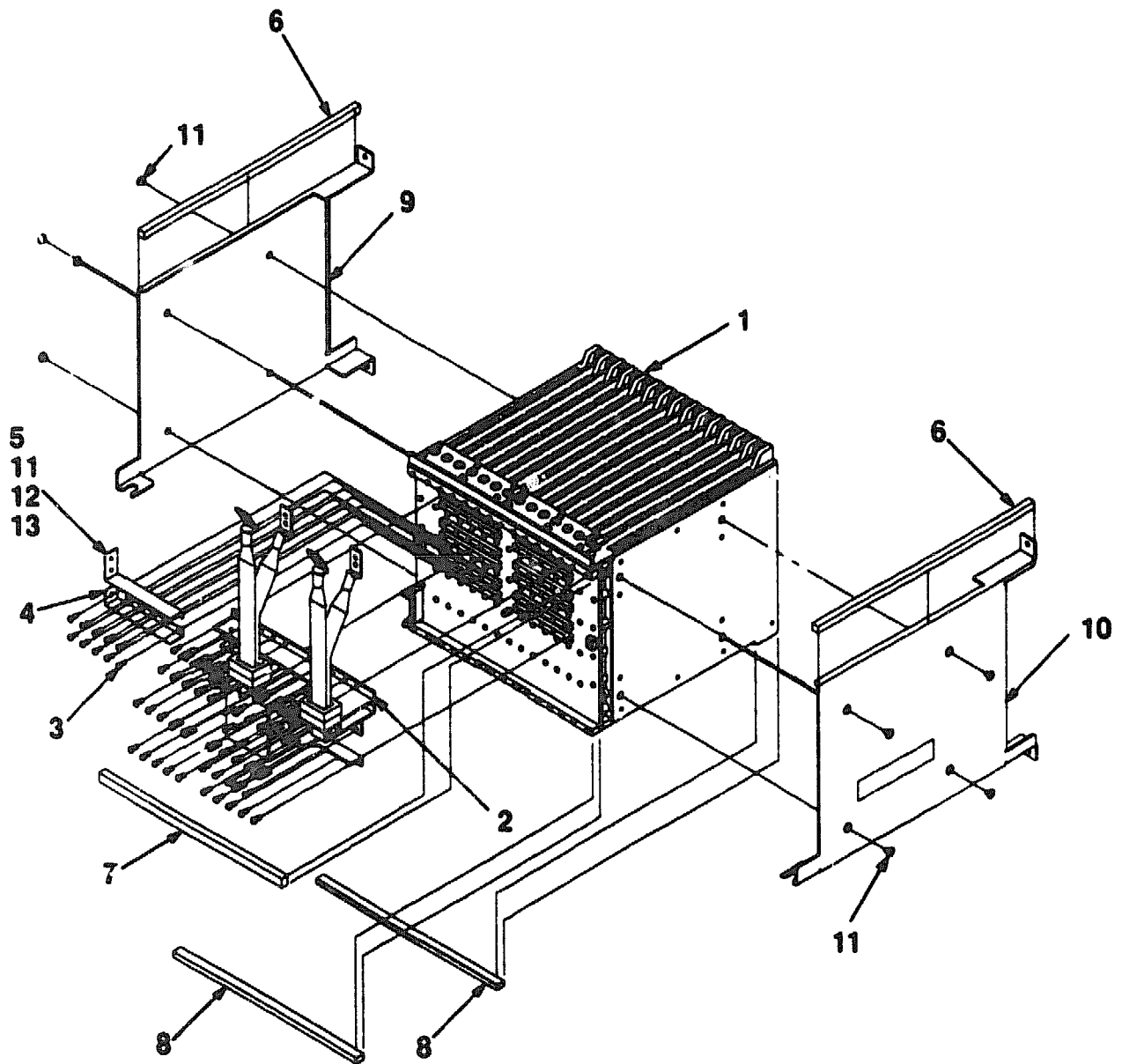


**NOTE: SHOWN FOR REFERENCE ONLY.
UNIT IS NOT TO BE DISASSEMBLED IN FIELD.**

6500X-09A-1L

Figure 9. Chassis Assembly, V.E. (Sheet 2 of 2)

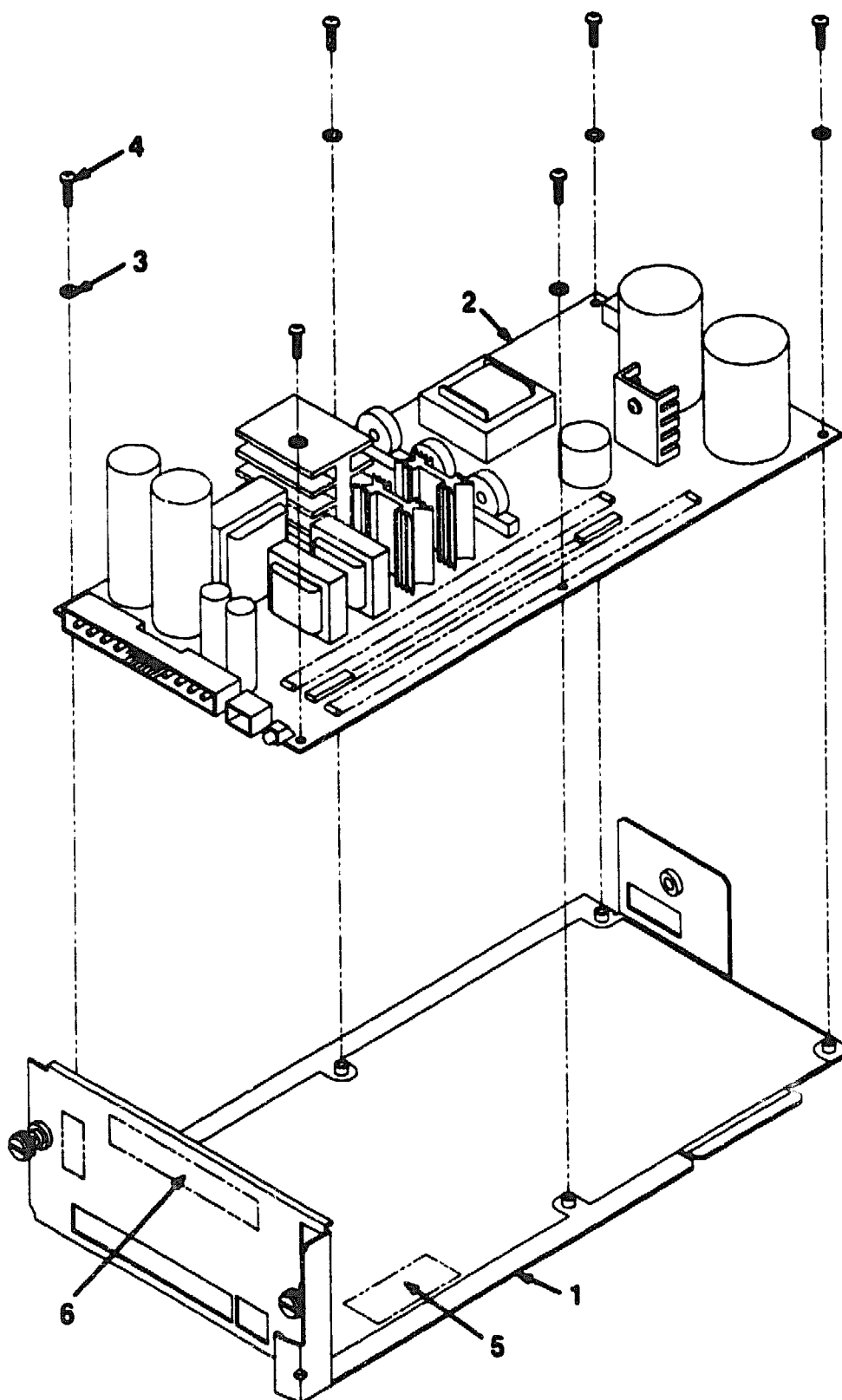
FIG. & ITEM NO.	DESCRIPTION	DEC PART NO.	ECO CUT-IN 70-22815 00000	USED ON CODE	REF FIG NO.
9-	CHASSIS ASSEMBLY, V.E. CHASSIS ASSEMBLY, V.E.	70-22815-01 70-22815-02		B A	7 7
1	*Standoff, PC Board	90-10568-01			
2	*Chassis Assembly (Weldment)	70-22715-01			
3	*Washer, Flat	90-06664-00			
4	*Nut, Kep No. 10-32	90-06565-00			
5	*Fuse, 5AG 30A 600V	12-22573-02		B	
6	*Label, "Fuse Replacement"	36-26213-01		B	
7	*Screw, Machine Flat Hd No. 6-32 x 3/8	90-08408-02			
8	*Module, AC Control	54-15690-00			
9	*Module, Isolation	20-28124-02			
10	*Tie, Cable	90-07032-00			
11	*Contactor, 30A 600V 240V	12-11147-01		A	
	*Contactor, 30A 600V 120V	12-11147-00		B	
12	*Washer, Flat	90-06659-00			
13	*Nut, Hex Ext Tooth Lockwasher No. 6-32	90-06560-00			
14	*Breaker, 11A/11A/11A-Aux 480V	12-28412-01		A	
	*Breaker, 20A/20A/20A/20A-Aux 240V	12-25471-02		B	
15	*Rod, Actuator	74-32259-01			
16	*Ring, External Retaining	90-09273-01			
17	*Screw, Self-Tap Pan Hd No. 6 x 3/8	90-00062-12			
18	*Bracket, Breaker Mounting	74-35212-01			
19	*Block, Fuse 5AG 30A	12-25633-01		A	
20	*Filter, Power Line	12-26306-02		A	
	*Filter, EMI/RFI	12-25185-03		B	
21	*Bracket, Fuse Box	74-36347-01		A	



6500X-10-IL

Figure 10. Bus Bar Assembly, XMI

FIG.& ITEM NO.	DESCRIPTION	DEC PART NO.	ECO CUT-IN 70-24902 00003	USED ON CODE	REF FIG NO.
10-	BUS BAR ASSEMBLY, XMI	70-24902-02			1
1	*Card Cage Assembly, System	70-26906-01			
2	*Bus Bar Assembly	12-27676-01			
3	*Screw, Sems Phi Pan Hd No. 6-32 x 5/16	90-09984-07			
4	*Bus Bar, Uninsulated	12-27939-01			
5	*Bus Bar, Uninsulated	12-27938-01			
6	*Tape, Foam	74-36670-02			
7	*Seal, Top Air	74-34536-01			
8	*Seal, Bottom Air	74-34536-03			
9	*Plate, XMI Mounting (RH)	74-34763-01			
10	*Plate, XMI Mounting (LH)	74-34763-02			
11	*Washer, Flat	90-06660-00			
12	*Nut, Hex Ext Tooth Lockwasher No. 8-32	90-06563-00			
13	*Tie, Cable	90-07031-00			
	CABLES (Not Shown)				
	*Harness Assembly, Wire 15 Cond	17-01566-01			
	*Harness Assembly, Wire 04 Cond	17-01525-01			

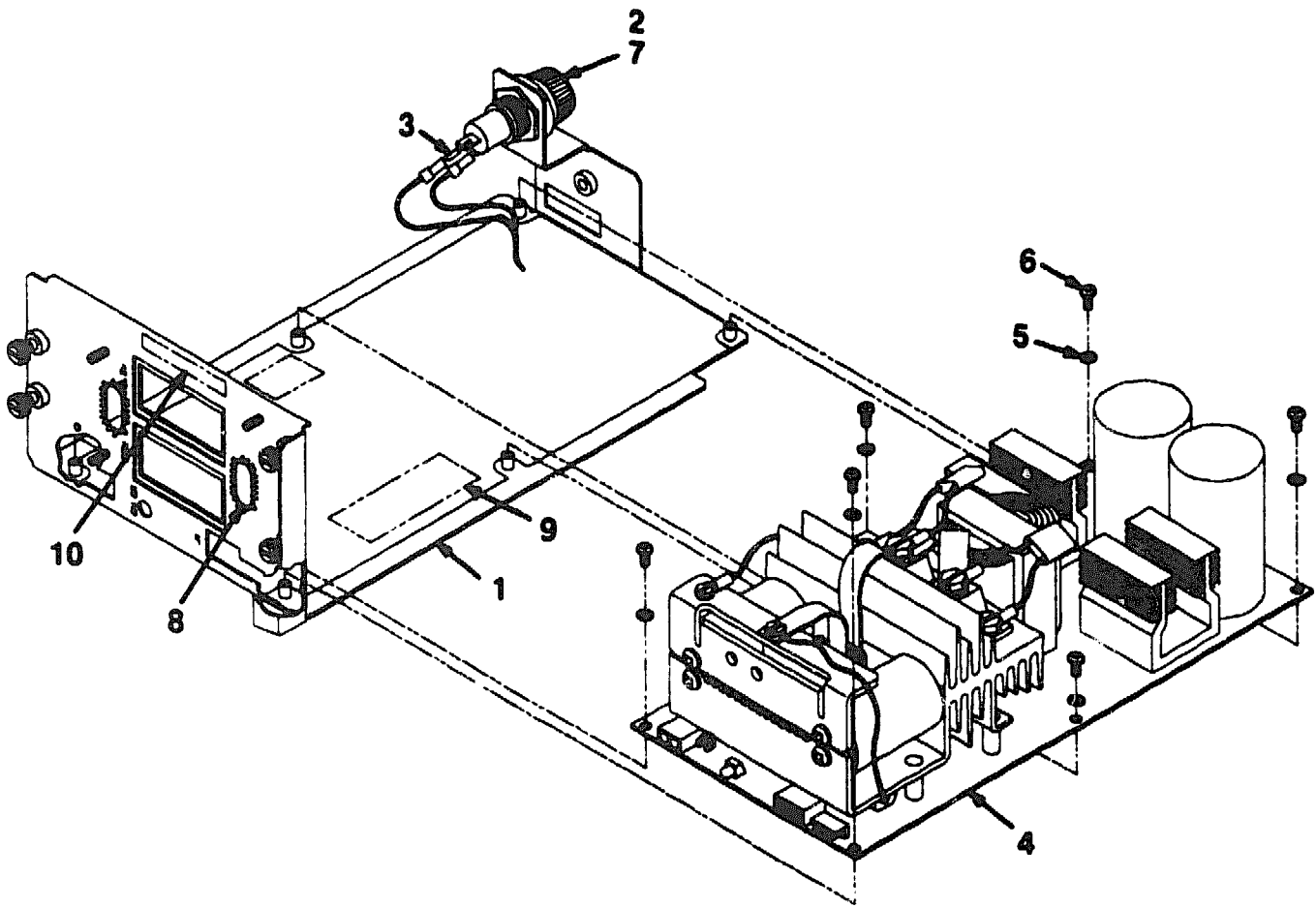


6500X-11-IL

Figure 11. Regulator Assembly, 300 Watts



FIG. & ITEM NO.	DESCRIPTION	DEC PART NO.	ECO CUT-IN H7215 00005	USED ON CODE	REF FIG NO.
11-	REGULATOR ASSEMBLY, 300 WATTS	H7215-A			1
1	*Bracket Assembly, Regulator 300W	70-24169-01			
2	*Module, Power Supply	54-16977-01			
3	*Washer, Lock	90-06633-00			
4	*Screw, Machine Pan Hd No. 6-32 x 1/4	90-06020-01			
5	*Label, "Serial/Power USA, UR/CSA"	36-17674-46			
6	*Label, "Kapton Blank"	36-27920-01			
	*Label, "Blank"	36-27921-01			
	*Label, "CSI"	36-27922-01			

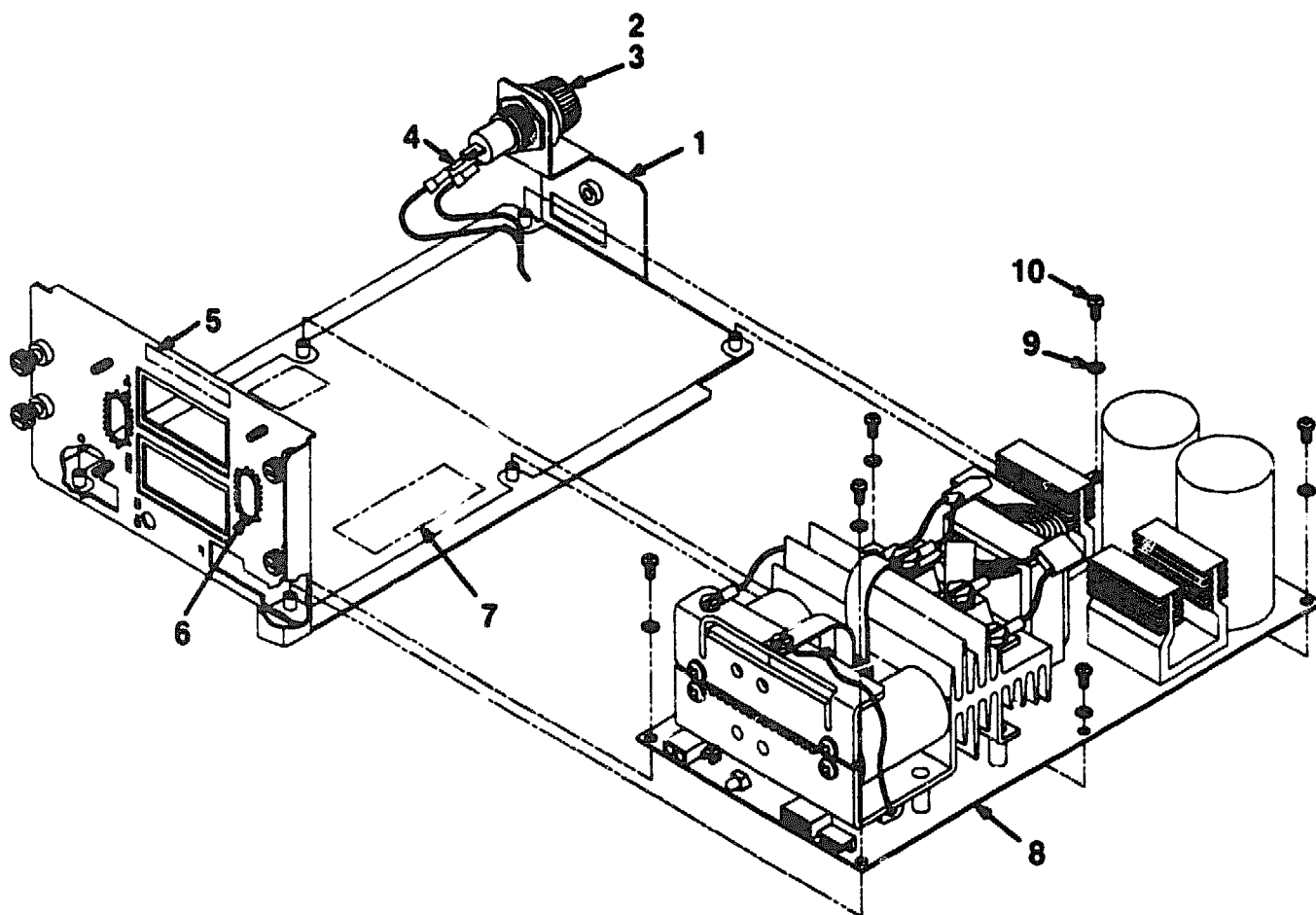


6500X-12-IL

Figure 12. Regulator Assembly, 600 Watts

PARTS LIST

FIG. & ITEM NO.	DESCRIPTION	DEC PART NO.	ECO CUT-IN H7214 00004	USED ON CODE	REF FIG NO.
12-	REGULATOR ASSEMBLY, 600 WATTS	H7214-A			2
1	*Bracket Assembly, Regulator 600W	70-24168-01			
2	*Holder, Fuse 5AG Type 30A 600V	12-27980-01			
3	*Harness Assembly, Wire 2 Cond 18 AWG	17-01663-01			
4	*Module, Input Converter DC-DC	54-17005-01			
5	*Washer, Lock	90-06633-00			
6	*Screw, Machine Phi Pan Hd No. 6-32 x 5/16	90-06021-01			
7	*Fuse, Norm Blo 5AG 8.0A 600V	12-17199-02			
8	*Grommet, Caterpillar	90-07035-00			
9	*Label, "Kapton Blank"	36-27920-01			
	*Label, "Blank"	36-27921-01			
	*Label, "CSI"	36-27922-01			
10	*Label, "Serial/Power USA, UR/CSA"	36-17674-46			
	*Label, "Serial/Power Universal"	36-17674-58			



6500X-13-IL

Figure 13. Regulator Assembly, 3.3 Volt

FIG.& ITEM NO.	DESCRIPTION	DEC PART NO.	ECO CUT-IN H7242 00000	USED ON CODE	REF FIG NO.
13-	REGULATOR ASSEMBLY, 3.3 VOLT	H7242-00			1
1	*Bracket Assembly, 3.3V Regulator	70-24168-02			
2	*Fuse, Norm-Blow 5AG 5A 600V	12-17199-01			
3	*Holder, Fuse 5AG Type 30A 600V	12-27980-01			
4	*Harness Assembly, Wire 2 Cond 18 AWG	17-01663-01			
5	*Label, "Kapton Blank"	36-27920-01			
	*Label, "Blank"	36-27921-01			
	*Label, "CSI"	36-27922-01			
6	*Grommet, Caterpillar	90-07035-00			
7	*Label, "Serial/Power USA, UR/CSA"	36-17674-46			
	*Label, "Serial/Power Universal"	36-17674-58			
8	*Module, H7242A Regulator	54-17005-02			
9	*Washer, Lock	90-06633-00			
10	*Screw, Machine Phi Pan Hd No. 6-32 x 5/16	90-06021-01			
					Ω

PART NUMBER/DESCRIPTION INDEX



INDEX BY DEC PART NUMBER **VAX 6000-500 SYSTEM**

PART NO.	DESCRIPTION	FIG NO.	ITEM NO.
12-11147-00	Contactor, 30A 600V 120V	9	11
12-11147-01	Contactor, 30A 600V 240V	9	11
12-11255-17	Filter, Foam Air	4	10
12-11255-22	Filter, Foam Air	4	11
12-11255-23	Filter, Foam Air	3	34
12-11255-24	Filter, Foam Air	3	26
12-11255-25	Filter, Foam Air	3	22
12-13756-07	Strap, Ground	3	7
12-13756-09	Strap, Ground	4	15
12-14574-00	Strain Relief Assembly, Power Cord	8	7
12-14574-03	Strain Relief Assembly, Power Cord	8	7
12-15843-01	Clip, Flat Cable	1	61
12-15843-03	Clip, Flat Cable	1	86
12-17119-01	Keys, Plastic	1	14
12-17199-01	Fuse, Norm-Blow 5AG 5A 600V	13	2
12-17199-02	Fuse, Norm Blo 5AG 8.0A 600V	12	7
12-19245-00	Battery, 3Cell 3.75V .18MA Nicad	5	11
12-20203-01	Hinge Assembly, Pull (LH)	3	3
12-20203-01	Hinge Assembly, Pull (LH)	4	2
12-21099-02	Filter, Power Bus	8	6
12-21535-01	Clip, Nylon RF Gasket	1	20
12-21535-01	Clip, Nylon RF Gasket	2	6
12-22196-02	Connector, D-Sub 15 Position	1	Not Shown
12-22573-02	Fuse, 5AG 30A 600V	9	5
12-24023-01	Cable Assembly, W/Wrist Strap	1	23
12-24095-01	Latch, Turn-Grip	4	5
12-24095-01	Latch, Turn-Grip	3	2
12-24701-06	Fan, Axial 45CFM 24VDC	6	2
12-25024-11	Sensor, Air Flow Temp	1	81
12-25185-03	Filter, EMI/RFI	9	20
12-25471-02	Breaker, 20A/20A/20A/20A-Aux 240V	9	14
12-25633-01	Block, Fuse 5AG 30A	9	19
12-26306-02	Filter, Power Line	9	20
12-26339-01	Key, Cabinet Door	1	Not Shown
12-26355-02	Filter, Line EMI/RFI 47-63 Hz	8	2
12-27250-01	Screw, Captive Shoulder No. 10-32 X 3/8	2	44
12-27676-01	Bus Bar Assembly	10	2
12-27848-01	Blower, Backward 24 VDC	1	62
12-27938-01	Bus Bar, Uninsulated	10	5
12-27939-01	Bus Bar, Uninsulated	10	4
12-27980-01	Holder, Fuse 5AG Type 30A 600V	13	3
12-27980-01	Holder, Fuse 5AG Type 30A 600V	12	2
12-28412-01	Breaker, 11A/11A/11A-Aux 480V	9	14
12-28434-06	Strip, Contact 2.66 Inches Long	3	9
12-28434-07	Strip, Contact 3.465 Inches Long	3	10
12-28434-08	Strip, Contact 0.465 Inches Long	3	11
12-28685-01	Gasket, RFI Shield	2	46
12-28686-02	Gasket, RFI Shield	4	7
12-28686-02	Gasket, RFI Shield	3	12
12-28686-03	Gasket, RFI Shield	3	13
12-28686-04	Gasket, RFI Shield	3	14
12-28686-05	Gasket, RFI Shield	3	15
12-28686-06	Gasket, RFI Shield	3	16
12-28686-07	Gasket, RFI Shield	3	17

INDEX BY DEC PART NUMBER
VAX 6000-500 SYSTEM

PART NO.	DESCRIPTION	FIG NO.	ITEM NO.
12-28686-08	Gasket, RFI Shield	3	18
12-28686-09	Gasket, RFI Shield	3	19
12-28686-10	Gasket, RFI Shield	3	20
12-28686-11	Gasket, RFI Shield	3	21
12-28686-12	Gasket, BECU	4	6
12-28686-14	Gasket, RFI Shield	3	33
12-28686-14	Gasket, RFI Shield	1	51
12-28686-16	Gasket, RFI Shield	1	55
12-28686-17	Gasket, RFI Shield	1	53
12-28804-01	Connector, PCB Header 26 Pin	5	14
12-30141-02	Bulkhead, ECM	1	88
16-28393-01	Transformer, 3-Phase P=416 50 Hz 4.5 KVA	1	21
17-00313-02	Cable Assembly, 06 Conductor Molded Shielded	1	Not Shown
17-01149-01	Jumper Assembly	1	67
17-01295-01	Harness Assembly, Wire 5 Cond 12 AWG	8	8
17-01445-01	Harness Assembly, Wire (J7,J8,J17)	6	7
17-01446-01	Harness Assembly, Wire 6 Cond	1	41
17-01447-01	Harness Assembly, Wire 4 Cond	1	87
17-01496-02	Cable Assembly, 11 Cond Molded 28-24 AWG	1	66
17-01497-02	Cable Assembly, Flat 34 Cond	1	76
17-01498-01	Cable Assembly, Flat 34 Cond	1	83
17-01499-01	Harness Assembly, Wire	1	35
17-01501-01	Harness Assembly, Wire	1	27
17-01525-01	Harness Assembly, Wire 04 Cond	10	Not Shown
17-01566-01	Harness Assembly, Wire 15 Cond	10	Not Shown
17-01567-01	Cable Assembly, 4 Cond	1	57
17-01568-02	Cable Assembly, 20 Cond	1	84
17-01570-01	Harness Assembly, Wire 9 Cond	1	63
17-01662-01	Harness Assembly, Wire	1	69
17-01663-01	Harness Assembly, Wire 2 Cond 18 AWG	13	4
17-01663-01	Harness Assembly, Wire 2 Cond 18 AWG	12	3
17-01666-01	Cable Assembly, Flat 34 Cond	1	50
17-01806-01	Harness Assembly, Wire 5 Cond 10 AWG	8	8
17-01815-01	Harness Assembly	1	28
17-01816-01	Cable Assembly, 20 Cond Flat	5	21
17-01818-01	Cable Assembly, 20 Cond Flat	5	20
17-01844-01	Harness Assembly, Wire 4 Cond	1	38
17-02262-01	Harness Assembly, Wire 12/14 AWG	7	10
17-02399-01	Harness Assembly, Wire 5 Cond 18 AWG	7	16
17-02400-01	Harness Assembly, Wire 13 Cond 14 AWG	7	12
17-02401-01	Harness Assembly, Wire 4 Cond 18 AWG	7	17
17-02402-01	Harness Assembly, Wire 7 Cond 14 AWG	7	12
17-02403-01	Harness Assembly, 3 Cond 12 AWG	7	Not Shown
17-02404-01	Harness Assembly, Wire 6 Cond 14 AWG	8	14
17-02406-01	Harness Assembly, Wire 4 Cond 16 AWG	7	14
17-02407-01	Harness Assembly, Wire 4 Cond 18 AWG	7	17
17-02449-01	Harness Assembly, Wire 10 Cond 16/18 AWG	8	12
17-02475-01	Harness Assembly, Wire 4 Cond 16 AWG	6	9
17-02494-01	Harness Assembly, Wire 12 Cond 24 AWG	6	10
17-02500-01	Harness Assembly, Wire 1 Cond 24 AWG	1	65
17-02521-01	Harness Assembly, Wire 2 Cond 28 AWG	1	64
17-02759-01	Harness Assembly, Wire 06 Cond 18 AWG	1	25

**INDEX BY DEC PART NUMBER
VAX 6000-500 SYSTEM**

PART NO.	DESCRIPTION	FIG NO.	ITEM NO.
20-28124-02	Module, Isolation	9	9
20-28997-01	Module, TK Filter Output	5	13
20-29176-02	Module, XTC XMI Timing Control	5	12
36-12680-02	Label, "Ground"	1	22
36-13272-00	Label, "Ground"	4	17
36-13272-00	Label, "Ground"	3	8
36-17615-01	Label, "Direct Thermal"	7	5
36-17615-01	Label, "Caution, Replace Fuse"	7	4
36-17674-46	Label, "Serial/Power USA, UR/CSA"	12	10
36-17674-46	Label, "Serial/Power USA, UR/CSA"	13	7
36-17674-46	Label, "Serial/Power USA, UR/CSA"	6	Not Shown
36-17674-46	Label, "Serial/Power USA, UR/CSA"	11	5
36-17674-58	Label, "Serial/Power Universal"	12	10
36-17674-58	Label, "Serial/Power Universal"	13	7
36-17880-02	Label, "FCC Class A Processor"	1	Not Shown
36-18307-05	Label, "Assembly 04, 01"	1	Not Shown
36-20886-01	Label, "Cable ID Tag"	1	93
36-21129-20	Label, "FTZ, VAX 6300"	1	Not Shown
36-23595-01	Label, "Control Panel"	1	Not Shown
36-23595-02	Label, "Control Panel"	1	37
36-25176-01	Label, "Fuse Warning"	7	7
36-25176-01	Label, "Fuse Warning"	6	Not Shown
36-25189-03	Label, "Regulatory System Electrical Data"	1	Not Shown
36-25988-05	Label, "PTT Approval VAX 6300 German"	1	Not Shown
36-26181-03	Label, "Calypso Bulkhead H405-E"	7	2
36-26181-04	Label, "Calypso Bulkhead H405-F"	7	2
36-26211-10	Label, "Serial/Power Rating Domestic"	7	3
36-26211-11	Label, "Serial/Power Rating Non-Domestic"	7	3
36-26211-12	Label, "Serial/Power Rating Domestic"	7	3
36-26213-01	Label, "Fuse Replacement"	9	6
36-26214-01	Label, "Fuse Warning French/English"	7	4
36-26516-02	Label, "Bar Code, Polyester"	7	5
36-27020-01	Label, "8228A Warning"	1	16
36-27920-01	Label, "Kapton Blank"	13	5
36-27920-01	Label, "Kapton Blank"	11	6
36-27920-01	Label, "Kapton Blank"	6	Not Shown
36-27920-01	Label, "Kapton Blank"	12	9
36-27921-01	Label, "Blank"	12	9
36-27921-01	Label, "Blank"	13	5
36-27921-01	Label, "Blank"	11	6
36-27921-01	Label, "Blank"	6	Not Shown
36-27922-01	Label, "CSI"	12	9
36-27922-01	Label, "CSI"	13	5
36-27922-01	Label, "CSI"	11	6
36-27922-01	Label, "CSI"	6	Not Shown
36-28231-08	Label, "Direct Thermal"	1	Not Shown
36-30422-13	Label, "Postcard FTZ, VAX 6310, VAX 6300"	1	Not Shown
36-33598-01	Label, "VAX6000 XMI"	1	31
54-15690-00	Module, AC Control	9	8
54-16574-01	Module, Control Panel	5	8
54-16977-01	Module, Power Supply	11	2
54-17005-01	Module, Input Converter DC-DC	12	4
54-17005-02	Module, H7242A Regulator	13	8

INDEX BY DEC PART NUMBER **VAX 6000-500 SYSTEM**

PART NO.	DESCRIPTION	FIG NO.	ITEM NO.
54-18169-01	Module, AC Input/Fan Drive	6	4
54-18172-01	Module, Clock Arbiter	1	68
54-19786-01	Module, H7206 Logic	6	5
70-19485-00	Panel Assembly, End	1	6
70-19581-02	Seal, Rear Switch Angle (Weldment)	2	42
70-19505-01	Gasket Assembly	1	29
70-19505-02	Gasket Assembly	1	19
70-19505-04	Gasket Assembly	2	27
70-19505-06	Gasket Assembly	2	5
70-19505-08	Gasket Assembly	2	14
70-19505-13	Gasket Assembly	2	47
70-19505-20	Gasket Assembly	2	45
70-19505-26	Gasket Assembly	2	15
70-19505-30	Gasket Assembly	2	31
70-21704-03	Panel, Kick	1	2
70-22117-01	Bezel Assembly, Control	5	9
70-22714-01	Panel Assembly, H405	8	1
70-22714-02	Panel Assembly, H405	8	1
70-22715-01	Chassis Assembly (Weldment)	9	2
70-22814-01	PANEL ASSEMBLY, V.E. COMPONENT	7	1
70-22814-01	PANEL ASSEMBLY, V.E. COMPONENT	8	N/A
70-22814-02	PANEL ASSEMBLY, V.E. COMPONENT	8	N/A
70-22814-02	PANEL ASSEMBLY, V.E. COMPONENT	7	1
70-22815-01	CHASSIS ASSEMBLY, V.E.	7	18
70-22815-01	CHASSIS ASSEMBLY, V.E.	9	N/A
70-22815-02	CHASSIS ASSEMBLY, V.E.	7	18
70-22815-02	CHASSIS ASSEMBLY, V.E.	9	N/A
70-23397-01	Cover, Top Weldment	1	17
70-24124-01	DOOR ASSEMBLY, REAR	4	N/A
70-24124-01	DOOR ASSEMBLY, REAR	1	11
70-24125-01	Door, Rear (Weldment)	4	1
70-24136-01	Tray Assembly	2	28
70-24168-01	Bracket Assembly, Regulator 600W	12	1
70-24168-02	Bracket Assembly, 3.3V Regulator	13	1
70-24169-01	Bracket Assembly, Regulator 300W	11	1
70-24389-01	Cover Assembly, BI Card Cage	1	33
70-24390-01	Cover Assembly, XMI Card Cage	1	42
70-24391-01	Tube (Weldment)	2	24
70-24409-01	Plane Assembly, Ground	2	39
70-24410-01	Cage (Weldment)	2	20
70-24610-01	I/O Assembly, Lower	2	41
70-24611-01	Structure Assembly, Blower	2	10
70-24612-01	Extension Assembly, Front	1	18
70-24613-01	Extension Assembly, Rear	1	47
70-24614-02	CABINET ASSEMBLY, MECHANICAL	2	N/A
70-24614-02	CABINET ASSEMBLY, MECHANICAL	1	1
70-24615-01	Chassis, XMI (Weldment)	2	21
70-24616-01	Chassis, BI (Weldment)	2	23
70-24618-01	Frame Assembly, Full Width Hinged	2	40
70-24621-01	Seal, Angle Weldment	2	18
70-24622-01	Door, Front (Weldment)	3	1
70-24623-01	DOOR ASSEMBLY, FRONT	3	N/A
70-24623-01	DOOR ASSEMBLY, FRONT	1	3
70-24742-02	Frame Assembly, 1.5 Bay	2	1

INDEX BY DEC PART NUMBER
VAX 6000-500 SYSTEM

PART NO.	DESCRIPTION	FIG NO.	ITEM NO.
70-24902-02	BUS BAR ASSEMBLY, XMI	10	N/A
70-24902-02	BUS BAR ASSEMBLY, XMI	1	72
70-24934-01	Cover, Rear	4	12
70-25525-01	Guide, Cable (Weldment)	1	58
70-25930-01	Tray Assembly, Cable	1	43
70-26905-01	Chassis Assembly	6	1
70-26906-01	Card Cage Assembly, System	10	1
70-27670-01	Baffle Assembly	1	32
70-27715-01	Support Assembly, Right	1	7
70-27818-01	Support Assembly, Left	1	9
70-27864-01	Cover, Bulkhead Assembly	1	10
70-27866-01	Control Assembly, Riveted System	5	1
70-27867-01	CONTROL ASSEMBLY, SYSTEM	1	36
70-27867-01	CONTROL ASSEMBLY, SYSTEM	5	N/A
74-13707-00	Strip	3	24
74-13707-01	Strip, Left And Right	3	23
74-13707-03	Strip	4	8
74-13707-07	Strip, Velcro	4	9
74-14318-00	Key, Button	2	19
74-26407-01	Panel, Sub Double	1	Not Shown
74-26638-01	Seal, Rear Single Angle	2	43
74-26725-01	Shield, Spring	2	34
74-31616-02	Logo, Corporate	1	4
74-32259-01	Rod, Actuator	9	15
74-33015-01	Screen, Bottom	2	32
74-33423-01	Button, Reset	5	10
74-34053-01	Shield, PC Module	6	6
74-34110-01	Support, H7206 Rear	2	36
74-34408-01	Bracket, LH	2	30
74-34409-01	Bracket, RH	2	29
74-34410-10	Panel (RH)	2	26
74-34536-01	Seal, Top Air	10	7
74-34536-03	Seal, Bottom Air	10	8
74-34752-01	Bracket, Front Sensor	1	82
74-34756-01	Rail, Third Support	2	2
74-34763-01	Plate, XMI Mounting (RH)	10	9
74-34763-02	Plate, XMI Mounting (LH)	10	10
74-34982-01	Plate, H7206 Mounting	2	35
74-35004-01	Panel, I/O Blower	1	60
74-35039-01	Seal, Front Angle Single	2	16
74-35042-01	Stiffener, Horizontal	3	25
74-35049-01	Bracket, Blower Structure (RH)	2	8
74-35050-01	Bracket, Blower Structure (LH)	2	7
74-35160-01	Bracket, Filler	2	37
74-35161-01	Bracket, Hinged I/O Ground	2	48
74-35212-01	Bracket, Breaker Mounting	9	18
74-35214-01	Seal, Front	2	38
74-35215-01	Panel, Front	1	24
74-35215-02	Panel, Front	1	24
74-35369-01	Bezel	1	5
74-35370-01	Retainer, Bezel	1	91
74-35834-01	Bracket, Front Extension	2	11
74-35843-01	Seal, Right Exhaust	3	29
74-35844-01	Seal, Top Exhaust	3	37

INDEX BY DEC PART NUMBER
VAX 6000-500 SYSTEM

PART NO.	DESCRIPTION	FIG NO.	ITEM NO.
74-35845-01	Seal, Left Exhaust	3	36
74-35846-01	Seal, Bottom Exhaust	3	32
74-35881-01	Cover, Exhaust	3	35
74-35887-01	Cover, Inlet	3	27
74-35919-01	Bracket, Filler Angle Seal	1	30
74-35920-01	Plate, Housing	5	18
74-35925-01	Plate, Control Panel	5	19
74-35973-01	Bracket	1	74
74-35974-01	Cover, 6 Watt Regulator	1	75
74-36347-01	Bracket, Fuse Box	9	21
74-36670-02	Tape, Foam	10	6
74-38221-01	Carrier, Number Slugs	3	30
74-38859-01	Retainer, Dust Cover	8	11
74-38860-01	Cover Assembly, H405 Chassis	7	9
74-39151-01	Bezel, TK Filler	5	2
74-39228-01	Cover, H7206B	6	8
74-41157-05	Gasket, EMI	5	7
74-41194-01	Retainer, Cable Cover	1	54
74-41224-01	Panel, Access	5	5
74-41410-01	Shield	5	4
74-41411-01	Guide, Cable	5	6
74-41494-01	Bracket, Filler Bezel Mounting	5	3
90-00003-01	Washer, Flat Nylon	2	25
90-00030-01	Rivet, Blind Dome	2	22
90-00030-21	Rivet, Blind Dome	2	33
90-00049-04	Screw, Sems Truss Hd No. 10-32 x 3/8	2	3
90-00062-01	Screw, Self-Tap Pan Hd No. 4 x 1/4	8	4
90-00062-10	Screw, Self-Tap Pan Hd No. 6 x 1/4	7	8
90-00062-10	Screw, Self-Tap Pan Hd No. 6 x 1/4	8	10
90-00062-12	Screw, Self-Tap Pan Hd No. 6 x 3/8	9	17
90-00062-14	Screw, Self-Tap Pan Hd No. 6 x 1/2	7	11
90-00063-39	Screw, Self-Tap Truss Hd No. 10 x 1/2	2	12
90-06020-01	Screw, Machine Pan Hd No. 6-32 x 1/4	11	4
90-06020-02	Screw Machine Flat Hd No. 6-32 x 1/4	5	25
90-06021-01	Screw, Machine Phi Pan Hd No. 6-32 x 5/16	13	10
90-06021-01	Screw, Machine Phi Pan Hd No. 6-32 x 5/16	12	6
90-06557-00	Nut, Kep No. 4-40	1	34
90-06560-00	Nut, Hex Ext Tooth Lockwasher No. 6-32	2	49
90-06560-00	Nut, Hex Ext Tooth Lockwasher No. 6-32	9	13
90-06560-00	Nut, Hex Ext Tooth Lockwasher No. 6-32	1	73
90-06560-00	Nut, Hex Ext Tooth Lockwasher No. 6-32	5	26
90-06560-00	Nut, Hex Ext Tooth Lockwasher No. 6-32	3	31
90-06563-00	Nut, Hex Ext Tooth Lockwasher No. 8-32	3	28
90-06563-00	Nut, Hex Ext Tooth Lockwasher No. 8-32	10	12
90-06563-00	Nut, Hex Ext Tooth Lockwasher No. 8-32	4	14
90-06563-00	Nut, Hex Ext Tooth Lockwasher No. 8-32	1	70
90-06565-00	Nut, Kep No. 10-32	9	4
90-06565-00	Nut, Kep No. 10-32	4	3
90-06565-00	Nut, Kep No. 10-32	3	4
90-06565-00	Nut, Kep No. 10-32	2	9
90-06565-00	Nut, Kep No. 10-32	7	20
90-06633-00	Washer, Lock	13	9
90-06633-00	Washer, Lock	11	3
90-06633-00	Washer, Lock	12	5

INDEX BY DEC PART NUMBER
VAX 6000-500 SYSTEM

PART NO.	DESCRIPTION	FIG NO.	ITEM NO.
90-06659-00	Washer, Flat	9	12
90-06660-00	Washer, Flat	4	13
90-06660-00	Washer, Flat	1	71
90-06660-00	Washer, Flat	10	11
90-06664-00	Washer, Flat	3	5
90-06664-00	Washer, Flat	1	12
90-06664-00	Washer, Flat	3	3
90-06664-00	Washer, Flat	7	19
90-06664-00	Washer, Flat	4	4
90-06668-00	Washer, Flat	1	92
90-07015-00	Grommet, Round Rubber	5	17
90-07031-00	Tie, Cable	1	80
90-07031-00	Tie, Cable	10	13
90-07032-00	Tie, Cable	7	6
90-07032-00	Tie, Cable	8	5
90-07032-00	Tie, Cable	9	10
90-07035-00	Grommet, Caterpillar	13	6
90-07035-00	Grommet, Caterpillar	12	8
90-07035-00	Grommet, Caterpillar	1	46
90-07212-00	Fuse, 3AG 1A 250V Slow-Blow	8	9
90-07216-00	Fuse, 3AG 2A 250V Slow-Blow	7	15
90-07651-00	Washer, External Tooth Lock	3	6
90-07651-00	Washer, External Tooth Lock	4	16
90-07786-00	Retainer, U-Nut No. 10-32	1	45
90-07786-00	Retainer, U-Nut No. 10-32	2	13
90-07880-00	Tie, Cable	5	16
90-07880-00	Tie, Cable	1	15
90-08203-00	Nut, Kep No. 1/4-20	2	17
90-08203-00	Nut, Kep No. 1/4-20	1	8
90-08390-00	Fuse, 3AB 10A 250V Norm-Blow	8	3
90-08406-02	Screw, Machine Flat Hd No. 6-32 x 3/8	9	7
90-08451-00	Screw Assembly, Lock	1	56
90-09273-01	Ring, External Retaining	9	16
90-09309-01	Nut, Lock No. 14 x 3/4	8	13
90-09309-02	Nut, Lock No. 1-11 x 1/2	8	13
90-09636-00	Clamp, Cable	1	89
90-09643-02	Screw, Sems Phi Pan Hd No. 4-40 x 1/4	5	24
90-09701-00	Screw, Sems Pan Hd No. 6-32 x 5/16	6	3
90-09718-00	Grommet, Strip	1	85
90-09984-02	Screw, Sems Pan Hd No. 6-32 x 7/16	1	90
90-09984-03	Screw, Sems Pan Hd No. 6-32 x 1/2	5	22
90-09984-04	Screw, Sems Pan Hd No. 10-32 x 3/4	1	13
90-09984-07	Screw, Sems Phi Pan Hd No. 6-32 x 5/16	5	23
90-09984-07	Screw, Sems Phi Pan Hd No. 6-32 x 5/16	1	40
90-09984-07	Screw, Sems Phi Pan Hd No. 6-32 x 5/16	10	3
90-09984-13	Screw, Sems Pan Hd No. 10-32 x 3/8	1	59
90-09988-00	Screw, Sems Hex Hd No. 1/4-20 x 1/2	2	4
90-09988-00	Screw, Sems Hex Hd No. 1/4-20 x 1/2	1	26
90-09988-05	Screw, Sems Hex Hd No. 10-32 x 1/2	1	44
90-09988-08	Screw, Sems Hex Hd No. 8-32 x 3/8	1	48
90-10568-01	Standoff, PC Board	5	15
90-10568-01	Standoff, PC Board	9	1
90-10586-02	Nut, Kep No. 6-32	7	13
90-10624-01	Bracket, Mounting	1	39

INDEX BY DEC PART NUMBER
VAX 6000-500 SYSTEM

PART NO.	DESCRIPTION	FIG NO.	ITEM NO.
H405-E	OUTPUT ASSEMBLY, V.E. POWER (Non-Domestic)	7	N/A
H405-E	OUTPUT ASSEMBLY, V.E. POWER (Non-Domestic)	1	52
H405-F	OUTPUT ASSEMBLY, V.E. POWER (Domestic)	7	N/A
H405-F	OUTPUT ASSEMBLY, V.E. POWER (Domestic)	1	52
H7206-B	POWER/LOGIC BOX ASSEMBLY	1	49
H7206-B	POWER/LOGIC BOX ASSEMBLY	6	N/A
H7214-A	REGULATOR ASSEMBLY, 600 WATTS	12	N/A
H7214-A	REGULATOR ASSEMBLY, 600 WATTS	1	78
H7215-A	REGULATOR ASSEMBLY, 300 WATTS	11	N/A
H7215-A	REGULATOR ASSEMBLY, 300 WATTS	1	77
H7242-00	REGULATOR ASSEMBLY, 3.3 VOLT	13	N/A
H7242-00	REGULATOR ASSEMBLY, 3.3 VOLT	1	79
H9657-CA	H9657-CA (Non-Domestic)	1	N/A
H9657-CB	H9657-CB (Domestic)	1	N/A
N/A	SYSTEM ASSEMBLY, VAX 6000-500	1	N/A

INDEX BY DEC PART DESCRIPTION
VAX 8000-500 SYSTEM

DESCRIPTION	DEC PART NO.	FIG. NO.	ITEM NO.
Baffle Assembly	70-27670-01	1	32
Battery, 3Cell 3.75V .18MA Nicad	12-19245-00	5	11
Bezel	74-35369-01	1	5
Bezel Assembly, Control	70-22117-01	5	9
Bezel, TK Filler	74-39151-01	5	2
Block, Fuse 5AG 30A	12-25633-01	9	19
Blower, Backward 24 VDC	12-27848-01	1	62
Bracket	74-35973-01	1	74
Bracket Assembly, 3.3V Regulator	70-24168-02	13	1
Bracket Assembly, Regulator 300W	70-24169-01	11	1
Bracket Assembly, Regulator 600W	70-24168-01	12	1
Bracket, Blower Structure (LH)	74-35050-01	2	7
Bracket, Blower Structure (RH)	74-35049-01	2	8
Bracket, Breaker Mounting	74-35212-01	9	18
Bracket, Filler	74-35160-01	2	37
Bracket, Filler Angle Seal	74-35919-01	1	30
Bracket, Filler Bezel Mounting	74-41494-01	5	3
Bracket, Front Extension	74-35834-01	2	11
Bracket, Front Sensor	74-34752-01	1	82
Bracket, Fuse Box	74-36347-01	9	21
Bracket, Hinged I/O Ground	74-35161-01	2	48
Bracket, LH	74-34408-01	2	30
Bracket, Mounting	90-10624-01	1	39
Bracket, RH	74-34409-01	2	29
Breaker, 11A/11A/11A-Aux 480V	12-28412-01	9	14
Breaker, 20A/20A/20A/20A-Aux 240V	12-25471-02	9	14
Bulkhead, ECM	12-30141-02	1	88
Bus Bar Assembly	12-27676-01	10	2
BUS BAR ASSEMBLY, XMI	70-24902-02	10	N/A
BUS BAR ASSEMBLY, XMI	70-24902-02	1	72
Bus Bar, Uninsulated	12-27939-01	10	4
Bus Bar, Uninsulated	12-27938-01	10	5
Button, Reset	74-33423-01	5	10
CABINET ASSEMBLY, MECHANICAL	70-24614-02	1	1
CABINET ASSEMBLY, MECHANICAL	70-24614-02	2	N/A
Cable Assembly, 06 Conductor Molded Shielded	17-00313-02	1	Not Shown
Cable Assembly, 11 Cond Molded 28-24 AWG	17-01496-02	1	66
Cable Assembly, 20 Cond	17-01568-02	1	84
Cable Assembly, 20 Cond Flat	17-01816-01	5	21
Cable Assembly, 20 Cond Flat	17-01818-01	5	20
Cable Assembly, 4 Cond	17-01567-01	1	57
Cable Assembly, Flat 34 Cond	17-01498-01	1	83
Cable Assembly, Flat 34 Cond	17-01497-02	1	76
Cable Assembly, Flat 34 Cond	17-01666-01	1	50
Cable Assembly, W/Wrist Strap	12-24023-01	1	23
Cage (Weldment)	70-24410-01	2	20
Card Cage Assembly, System	70-26906-01	10	1
Carrier, Number Slugs	74-38221-01	3	30
Chassis Assembly	70-26905-01	6	1
CHASSIS ASSEMBLY, V.E.	70-22815-02	7	18
CHASSIS ASSEMBLY, V.E.	70-22815-02	9	N/A
CHASSIS ASSEMBLY, V.E.	70-22815-01	7	18
CHASSIS ASSEMBLY, V.E.	70-22815-01	9	N/A

**INDEX BY DEC PART DESCRIPTION
VAX 6000-500 SYSTEM**

DESCRIPTION	DEC PART NO.	FIG. NO.	ITEM NO.
Chassis Assembly (Weldment)	70-22715-01	9	2
Chassis, BI (Weldment)	70-24616-01	2	23
Chassis, XMI (Weldment)	70-24615-01	2	21
Clamp, Cable	90-09636-00	1	89
Clip, Flat Cable	12-15843-01	1	81
Clip, Flat Cable	12-15843-03	1	86
Clip, Nylon RF Gasket	12-21535-01	1	20
Clip, Nylon RF Gasket	12-21535-01	2	6
Connector, D-Sub 15 Position	12-22196-02	1	Not Shown
Connector, PCB Header 26 Pin	12-28804-01	5	14
Contactor, 30A 600V 120V	12-11147-00	9	11
Contactor, 30A 600V 240V	12-11147-01	9	11
Control Assembly, Riveted System	70-27866-01	5	1
CONTROL ASSEMBLY, SYSTEM	70-27867-01	1	36
CONTROL ASSEMBLY, SYSTEM	70-27867-01	5	N/A
Cover Assembly, BI Card Cage	70-24389-01	1	33
Cover Assembly, H405 Chassis	74-38860-01	7	9
Cover Assembly, XMI Card Cage	70-24390-01	1	42
Cover, 6 Watt Regulator	74-35974-01	1	75
Cover, Bulkhead Assembly	70-27864-01	1	10
Cover, Exhaust	74-35881-01	3	35
Cover, H7206B	74-39228-01	6	8
Cover, Inlet	74-35887-01	3	27
Cover, Rear	70-24934-01	4	12
Cover, Top Weldment	70-23397-01	1	17
DOOR ASSEMBLY, FRONT	70-24623-01	3	N/A
DOOR ASSEMBLY, FRONT	70-24623-01	1	3
DOOR ASSEMBLY, REAR	70-24124-01	1	11
DOOR ASSEMBLY, REAR	70-24124-01	4	N/A
Door, Front (Weldment)	70-24622-01	3	1
Door, Rear (Weldment)	70-24125-01	4	1
Extension Assembly, Front	70-24612-01	1	18
Extension Assembly, Rear	70-24613-01	1	47
Fan, Axial 45CFM 24VDC	12-24701-06	6	2
Filter, EMI/RFI	12-25185-03	9	20
Filter, Foam Air	12-11255-24	3	26
Filter, Foam Air	12-11255-23	3	34
Filter, Foam Air	12-11255-22	4	11
Filter, Foam Air	12-11255-17	4	10
Filter, Foam Air	12-11255-25	3	22
Filter, Line EMI/RFI 47-63 Hz	12-26355-02	8	2
Filter, Power Bus	12-21099-02	8	6
Filter, Power Line	12-26306-02	9	20
Frame Assembly, 1.5 Bay	70-24742-02	2	1
Frame Assembly, Full Width Hinged	70-24618-01	2	40
Fuse, 3AB 10A 250V Norm-Blow	90-08390-00	8	3
Fuse, 3AG 1A 250V Slow-Blow	90-07212-00	8	9
Fuse, 3AG 2A 250V Slow-Blow	90-07216-00	7	15
Fuse, 5AG 30A 600V	12-22573-02	9	5
Fuse, Norm Blo 5AG 8.0A 600V	12-17199-02	12	7
Fuse, Norm-Blow 5AG 5A 600V	12-17199-01	13	2

INDEX BY DEC PART DESCRIPTION
VAX 6000-500 SYSTEM

DESCRIPTION	DEC PART NO.	FIG. NO.	ITEM NO.
Gasket Assembly	70-19605-04	2	27
Gasket Assembly	70-19605-30	2	31
Gasket Assembly	70-19605-26	2	15
Gasket Assembly	70-19605-13	2	47
Gasket Assembly	70-19605-08	2	14
Gasket Assembly	70-19605-02	1	19
Gasket Assembly	70-19605-01	1	29
Gasket Assembly	70-19605-20	2	45
Gasket Assembly	70-19605-06	2	5
Gasket, BECU	12-28686-12	4	6
Gasket, EMI	74-41157-05	5	7
Gasket, RFI Shield	12-28686-05	3	15
Gasket, RFI Shield	12-28686-11	3	21
Gasket, RFI Shield	12-28686-17	1	53
Gasket, RFI Shield	12-28686-06	3	16
Gasket, RFI Shield	12-28686-02	3	12
Gasket, RFI Shield	12-28686-10	3	20
Gasket, RFI Shield	12-28686-08	3	18
Gasket, RFI Shield	12-28686-02	4	7
Gasket, RFI Shield	12-28686-03	3	13
Gasket, RFI Shield	12-28686-14	1	51
Gasket, RFI Shield	12-28686-04	3	14
Gasket, RFI Shield	12-28686-07	3	17
Gasket, RFI Shield	12-28686-16	1	55
Gasket, RFI Shield	12-28686-14	3	33
Gasket, RFI Shield	12-28686-09	3	19
Gasket, RFI Shield	12-28685-01	2	46
Grommet, Caterpillar	90-07035-00	12	8
Grommet, Caterpillar	90-07035-00	13	6
Grommet, Polyamide Caterpillar	90-07035-00	1	46
Grommet, Round Rubber	90-07015-00	5	17
Grommet, Strip	90-09718-00	1	85
Guide, Cable	74-41411-01	5	6
Guide, Cable (Weldment)	70-25525-01	1	58
H9657-CA (Non-Domestic)	H9657-CA	1	N/A
H9657-CB (Domestic)	H9657-CB	1	N/A
Harness Assembly	17-01815-01	1	28
Harness Assembly, 3 Cond 12 AWG	17-02403-01	7	Not Shown
Harness Assembly, Wire	17-01501-01	1	27
Harness Assembly, Wire	17-01499-01	1	35
Harness Assembly, Wire	17-01662-01	1	69
Harness Assembly, Wire (J7,J8,J17)	17-01445-01	6	7
Harness Assembly, Wire 04 Cond	17-01525-01	10	Not Shown
Harness Assembly, Wire 06 Cond 18 AWG	17-02756-01	1	25
Harness Assembly, Wire 1 Cond 24 AWG	17-02500-01	1	65
Harness Assembly, Wire 10 Cond 16/18 AWG	17-02449-01	8	12
Harness Assembly, Wire 12/14 AWG	17-02282-01	7	10
Harness Assembly, Wire 13 Cond 14 AWG	17-02400-01	7	12
Harness Assembly, Wire 15 Cond	17-01566-01	10	Not Shown
Harness Assembly, Wire 2 Cond 18 AWG	17-01663-01	12	3
Harness Assembly, Wire 2 Cond 18 AWG	17-01663-01	13	4
Harness Assembly, Wire 2 Cond 28 AWG	17-02521-01	1	64
Harness Assembly, Wire 4 Cond	17-01447-01	1	87
Harness Assembly, Wire 4 Cond	17-01844-01	1	38

INDEX BY DEC PART DESCRIPTION
VAX 6000-500 SYSTEM

DESCRIPTION	DEC PART NO.	FIG. NO.	ITEM NO.
Harness Assembly, Wire 4 Cond 18 AWG	17-02475-01	6	9
Harness Assembly, Wire 4 Cond 18 AWG	17-02406-01	7	14
Harness Assembly, Wire 4 Cond 18 AWG	17-02401-01	7	17
Harness Assembly, Wire 4 Cond 18 AWG	17-02407-01	7	17
Harness Assembly, Wire 5 Cond 10 AWG	17-01806-01	8	8
Harness Assembly, Wire 5 Cond 12 AWG	17-01295-01	8	8
Harness Assembly, Wire 5 Cond 18 AWG	17-02399-01	7	16
Harness Assembly, Wire 6 Cond	17-01446-01	1	41
Harness Assembly, Wire 6 Cond 14 AWG	17-02404-01	8	14
Harness Assembly, Wire 7 Cond 14 AWG	17-02402-01	7	12
Harness Assembly, Wire 9 Cond	17-01570-01	1	63
Harness Assembly, Wire 12 Cond 24 AWG	17-02494-01	6	10
Hinge Assembly, Pull (LH)	12-20203-01	3	3
Hinge Assembly, Pull (LH)	12-20203-01	4	2
Holder, Fuse 5AG Type 30A 600V	12-27980-01	13	3
Holder, Fuse 5AG Type 30A 600V	12-27980-01	12	2
I/O Assembly, Lower	70-24610-01	2	41
Jumper Assembly	17-01149-01	1	67
Key, Button	74-14318-00	2	19
Key, Cabinet Door	12-26339-01	1	Not Shown
Keys, Plastic	12-17119-01	1	14
Label "Blank"	36-27921-01	11	6
Label "CSI"	36-27922-01	11	6
Label "Kapton Blank"	36-27920-01	11	6
Label, "822BA Warning"	36-27020-01	1	16
Label, "Assembly 04, 01"	36-18307-05	1	Not Shown
Label, "Bar Code, Polyester"	36-26516-02	7	5
Label, "Blank"	36-27921-01	13	5
Label, "Blank"	36-27921-01	6	Not Shown
Label, "Blank"	36-27921-01	12	9
Label, "Cable ID Tag"	36-20866-01	1	93
Label, "Calypso Bulkhead H405-E"	36-26181-03	7	2
Label, "Calypso Bulkhead H405-F"	36-26181-04	7	2
Label, "Caution, Replace Fuse"	36-17615-01	7	4
Label, "Control Panel"	36-23595-01	1	Not Shown
Label, "Control Panel"	36-23595-02	1	37
Label, "CSI"	36-27922-01	12	9
Label, "CSI"	36-27922-01	6	Not Shown
Label, "CSI"	36-27922-01	13	5
Label, "Direct Thermal"	36-17615-01	7	5
Label, "Direct Thermal"	36-28231-08	1	Not Shown
Label, "FCC Class A Processor"	36-17880-02	1	Not Shown
Label, "FTZ, VAX 6300"	36-21129-20	1	Not Shown
Label, "Fuse Replacement"	36-26213-01	9	6
Label, "Fuse Warning French/English"	36-26214-01	7	4
Label, "Fuse Warning"	36-25176-01	7	7
Label, "Fuse Warning"	36-25176-01	6	Not Shown
Label, "Ground"	36-13272-00	4	17
Label, "Ground"	36-12680-02	1	22
Label, "Ground"	36-13272-00	3	8
Label, "Kapton Blank"	36-27920-01	12	9

INDEX BY DEC PART DESCRIPTION VAX 6000-500 SYSTEM

DESCRIPTION	DEC PART NO.	FIG. NO.	ITEM NO.
Label, "Kapton Blank"	36-27920-01	6	Not Shown
Label, "Kapton Blank"	36-27920-01	13	5
Label, "Postcard FTZ, VAX 6310, VAX 6300"	36-30422-13	1	Not Shown
Label, "PTT Approval VAX 6300 German"	36-25988-05	1	Not Shown
Label, "Regulatory System Electrical Data"	36-25189-03	1	Not Shown
Label, "Serial/Power Rating Domestic"	36-26211-12	7	3
Label, "Serial/Power Rating Domestic"	36-26211-10	7	3
Label, "Serial/Power Rating Non-Domestic"	36-26211-11	7	3
Label, "Serial/Power Universal"	36-17674-58	12	10
Label, "Serial/Power Universal"	36-17674-58	13	7
Label, "Serial/Power USA, UR/CSA"	36-17674-46	12	10
Label, "Serial/Power USA, UR/CSA"	36-17674-46	11	5
Label, "Serial/Power USA, UR/CSA"	36-17674-46	13	7
Label, "Serial/Power USA, UR/CSA"	36-17674-46	6	Not Shown
Label, "VAX6000 XMI"	36-33598-01	1	31
Latch, Turn-Grip	12-24095-01	4	5
Latch, Turn-Grip	12-24095-01	3	2
Logo, Corporate	74-31616-02	1	4
Module, AC Control	54-15690-00	9	8
Module, AC Input/Fan Drive	54-18169-01	6	4
Module, Clock Arbiter	54-18172-01	1	68
Module, Control Panel	54-16574-01	5	8
Module, H7206 Logic	54-19786-01	6	5
Module, H7242A Regulator	54-17005-02	13	8
Module, Input Converter DC-DC	54-17005-01	12	4
Module, Isolation	20-28124-02	9	9
Module, Power Supply	54-16977-01	11	2
Module, TK Filter Output	20-28987-01	5	13
Module, XTC XMI Timing Control	20-29176-02	5	12
Nut, Hex Ext Tooth Lockwasher No. 8-32	90-06563-00	4	14
Nut, Hex Ext Tooth Lockwasher No. 6-32	90-06560-00	9	13
Nut, Hex Ext Tooth Lockwasher No. 6-32	90-06560-00	1	73
Nut, Hex Ext Tooth Lockwasher No. 6-32	90-06560-00	3	31
Nut, Hex Ext Tooth Lockwasher No. 6-32	90-06530-00	5	26
Nut, Hex Ext Tooth Lockwasher No. 6-32	90-06560-00	2	49
Nut, Hex Ext Tooth Lockwasher No. 8-32	90-06563-00	10	12
Nut, Hex Ext Tooth Lockwasher No. 8-32	90-06563-00	1	70
Nut, Hex Ext Tooth Lockwasher No. 8-32	90-06563-00	3	28
Nut, Kep No. 1/4-20	90-08203-00	2	17
Nut, Kep No. 1/4-20	90-08203-00	1	8
Nut, Kep No. 10-32	90-06565-00	7	20
Nut, Kep No. 10-32	90-06565-00	9	4
Nut, Kep No. 10-32	90-06565-00	4	3
Nut, Kep No. 10-32	90-06565-00	2	9
Nut, Kep No. 10-32	90-06565-00	3	4
Nut, Kep No. 4-40	90-06557-00	1	34
Nut, Kep No. 6-32	90-10586-02	7	13
Nut, Lock No. 1-11 x 1/2	90-09309-02	8	13
Nut, Lock No. 14 x 3/4	90-09309-01	8	13
OUTPUT ASSEMBLY, V.E. POWER (Domestic)	H405-F	7	N/A
OUTPUT ASSEMBLY, V.E. POWER (Domestic)	H405-F	1	52
OUTPUT ASSEMBLY, V.E. POWER (Non-Domestic)	H405-E	7	N/A
OUTPUT ASSEMBLY, V.E. POWER (Non-Domestic)	H405-E	1	52

INDEX BY DEC PART DESCRIPTION
VAX 6000-570 SYSTEM

DESCRIPTION	DEC PART NO.	FIG. NO.	ITEM NO.
Panel (RH)	74-34410-10	2	26
Panel Assembly, End	70-19485-00	1	6
Panel Assembly, H405	70-22714-01	8	1
Panel Assembly, H405	70-22714-02	8	1
PANEL ASSEMBLY, V.E. COMPONENT	70-22814-02	7	1
PANEL ASSEMBLY, V.E. COMPONENT	70-22814-01	8	N/A
PANEL ASSEMBLY, V.E. COMPONENT	70-22814-02	8	N/A
PANEL ASSEMBLY, V.E. COMPONENT	70-22814-01	7	1
Panel, Access	74-41224-01	5	5
Panel, Front	74-35215-01	1	24
Panel, Front	74-35215-02	1	24
Panel, I/O Blower	74-35004-01	1	60
Panel, Kick	70-21704-03	1	2
Panel, Sub Double	74-26407-01	1	Not Shown
Plane Assembly, Ground	70-24409-01	2	39
Plate, Control Panel	74-35925-01	5	19
Plate, H7206 Mounting	74-34982-01	2	35
Plate, Housing	74-35920-01	5	18
Plate, XMI Mounting (LH)	74-34763-02	10	10
Plate, XMI Mounting (RH)	74-34763-01	10	9
POWER/LOGIC BOX ASSEMBLY	H7206-B	1	49
POWER/LOGIC BOX ASSEMBLY	H7206-B	6	N/A
Rail, Third Support	74-34756-01	2	2
REGULATOR ASSEMBLY, 3.3 VOLT	H7242-00	13	N/A
REGULATOR ASSEMBLY, 3.3 VOLT	H7242-00	1	79
REGULATOR ASSEMBLY, 300 WATTS	H7215-A	11	N/A
REGULATOR ASSEMBLY, 300 WATTS	H7215-A	1	77
REGULATOR ASSEMBLY, 600 WATTS	H7214-A	12	N/A
REGULATOR ASSEMBLY, 600 WATTS	H7214-A	1	78
Retainer, Bezel	74-35370-01	1	91
Retainer, Cable Cover	74-41194-01	1	54
Retainer, Dust Cover	74-38859-01	8	11
Retainer, U-Nut No. 10-32	90-07786-00	2	13
Retainer, U-Nut No. 10-32	90-07786-00	1	45
Ring, External Retaining	90-09273-01	9	16
Rivet, Blind Dome	90-00030-01	2	22
Rivet, Blind Dome	90-00030-21	2	33
Rod, Actuator	74-32259-01	9	15
Screen, Bottom	74-33015-01	2	32
Screw Assembly, Lock	90-08451-00	1	56
Screw Machine Flat Hd No. 6-32 x 1/4	90-06020-02	5	25
Screw, Captive Shoulder No. 10-32 X 3/8	12-27250-01	2	44
Screw, Machine Flat Hd No. 6-32 x 3/8	90-08406-02	9	7
Screw, Machine Pan Hd No. 6-32 x 1/4	90-06020-01	11	4
Screw, Machine Phi Pan Hd No. 6-32 x 5/16	90-06021-01	13	10
Screw, Machine Phi Pan Hd No. 6-32 x 5/16	90-06021-01	12	6
Screw, Self-Tap Pan Hd No. 4 x 1/4	90-00062-01	8	4
Screw, Self-Tap Pan Hd No. 6 x 1/2	90-00062-14	7	11
Screw, Self-Tap Pan Hd No. 6 x 1/4	90-00062-10	7	8
Screw, Self-Tap Pan Hd No. 6 x 1/4	90-00062-10	8	10
Screw, Self-Tap Pan Hd No. 6 x 3/8	90-00062-12	9	17
Screw, Self-Tap Truss Hd No. 10 x 1/2	90-00063-39	2	12
Screw, Sems Hex Hd No. 1/4-20 x 1/2	90-09988-00	1	26
Screw, Sems Hex Hd No. 1/4-20 x 1/2	90-09988-00	2	4

INDEX BY DEC PART DESCRIPTION
VAX 6000-500 SYSTEM

DESCRIPTION	DEC PART NO.	FIG. NO.	ITEM NO.
Screw, Sems Hex Hd No. 10-32 x 1/2	90-09988-05	1	44
Screw, Sems Hex Hd No. 8-32 x 3/8	90-09988-06	1	48
Screw, Sems Pan Hd No. 10-32 x 3/4	90-09984-04	1	13
Screw, Sems Pan Hd No. 10-32 x 3/8	90-09984-13	1	56
Screw, Sems Pan Hd No. 6-32 x 1/2	90-09984-03	5	42
Screw, Sems Pan Hd No. 6-32 x 5/16	90-09701-00	6	3
Screw, Sems Pan Hd No. 6-32 x 7/16	90-09984-02	1	90
Screw, Sems Phi Pan Hd No. 4-40 x 1/4	90-09843-02	5	24
Screw, Sems Phi Pan Hd No. 6-32 x 5/16	90-09984-07	10	3
Screw, Sems Phi Pan Hd No. 6-32 x 5/16	90-09984-07	5	23
Screw, Sems Phi Pan Hd No. 6-32 x 5/16	90-09984-07	1	40
Screw, Sems Truss Hd No. 10-32 x 3/8	90-00049-04	2	3
Seal, Angle Weldment	70-24621-01	2	18
Seal, Bottom Air	74-34536-03	10	8
Seal, Bottom Exhaust	74-35846-01	3	32
Seal, Front	74-35214-01	2	38
Seal, Front Angle Single	74-35039-01	2	16
Seal, Left Exhaust	74-35845-01	3	36
Seal, Rear Single Angle	74-26638-01	2	43
Seal, Rear Switch Angle (Weldment)	70-19581-02	2	42
Seal, Right Exhaust	74-35843-01	3	29
Seal, Top Air	74-34536-01	10	7
Seal, Top Exhaust	74-35844-01	3	37
Sensor, Air Flow Temp	12-25024-11	1	81
Shield	74-41410-01	5	4
Shield, PC Module	74-34053-01	6	6
Shield, Spring	74-26725-01	2	34
Standoff, PC Board	90-10568-01	9	1
Standoff, PC Board	90-10568-01	5	15
Stiffener, Horizontal	74-35042-01	3	25
Strain Relief Assembly, Power Cord	12-14574-00	8	7
Strain Relief Assembly, Power Cord	12-14574-03	8	7
Strap, Ground	12-13756-07	3	7
Strap, Ground	12-13756-09	4	15
Strip	74-13707-00	3	24
Strip	74-13707-03	4	8
Strip, Contact 0.465 Inches Long	12-28434-08	3	11
Strip, Contact 2.66 Inches Long	12-28434-06	3	9
Strip, Contact 3.465 Inches Long	12-28434-07	3	10
Strip, Left And Right	74-13707-01	3	23
Strip, Velcro	74-13707-07	4	9
Structure Assembly, Blower	70-24611-01	2	10
Support Assembly, Left	70-27818-01	1	9
Support Assembly, Right	70-27715-01	1	7
Support, H7206 Rear	74-34110-01	2	36
SYSTEM ASSEMBLY, VAX 6000-500	N/A	1	N/A
Tape, Foam	74-36670-02	10	6
Tie, Cable	90-07031-00	10	13
Tie, Cable	90-07032-00	7	6
Tie, Cable	90-07032-00	9	10
Tie, Cable	90-07880-00	5	16
Tie, Cable	90-07031-00	1	80
Tie, Cable	90-07880-00	1	15
Tie, Cable	90-07032-00	8	5

**INDEX BY DEC PART DESCRIPTION
VAX 6000-500 SYSTEM**

DESCRIPTION	DEC PART NO.	FIG. NO.	ITEM NO.
Transformer, 3-Phase P=416 50 Hz 4.5 KVA	16-28393-01	1	21
Tray Assembly	70-24136-01	2	28
Tray Assembly, Cable	70-25930-01	1	43
Tube (Weldment)	70-24391-01	2	24
Washer, External Tooth Lock	90-07651-00	3	6
Washer, External Tooth Lock	90-07651-00	4	16
Washer, Flat	90-06664-00	7	19
Washer, Flat	90-06664-00	9	3
Washer, Flat	90-06660-00	10	11
Washer, Flat	90-06659-00	9	12
Washer, Flat	90-06668-00	1	92
Washer, Flat	90-06664-00	3	5
Washer, Flat	90-06660-00	1	71
Washer, Flat	90-06664-00	4	4
Washer, Flat	90-06660-00	4	13
Washer, Flat	90-06664-00	1	12
Washer, Flat Nylon	90-00003-01	2	25
Washer, Lock	90-06633-00	11	3
Washer, Lock	90-06633-00	12	5
Washer, Lock	90-06633-00	13	9